



विकास प्रबंधन संस्थान
Development Management Institute



Annual Report
2015-16



EMPOWERING GRASSROOTS

About Logo



The geometric approach signifies the rigour and discipline essential for any kind of development and growth. At the centre is a solid square which portrays the institute and its strong inter-linkages with the external world, as seen by the four connecting routes to the outer octagonal shape. Four honeycombed shapes surrounding the solid square represent the key stakeholders - State, Civil Society, Markets, and Community.

The leaf-like structures on all four corners signify an open book, strengthening the perception of an academic institution. The circles along with the leaves represent the blossoming of empowered graduates with an integrated learning of perspectives, operational competencies, and contextual understanding. The sharp yet dynamic form represents discipline, excellence, and mindful alertness.

Set in an earthly terracotta colour, the symbol portrays rootedness and humility with commitment to impart good education, that applied right, ushers in progressive well-being.

Empowering Grassroots

Board of Governors, DMI Society

Chairman

1. Shri Anup Mukerji Former Chief Secretary, Govt. of Bihar

Members

2. Representative Ministry of HRD, Govt. of India
3. Prof. Tushaar Shah Sr. Fellow, International Water Management Institute (IWMI), Anand, Gujrat
4. Prof. Trilochan Sastry Professor, Indian Institute of Management, Bangalore (IIMB)
5. Dr. Ravi Mittal, IAS Principal Secretary, Finance Department, Govt. of Bihar
6. Shri Arvind Kr. Chaudhary, IAS Secretary, Rural Development Department, Govt. of Bihar
7. Shri Balamurugan D, IAS CEO, BRLPS, Patna, Bihar
8. Smt. Seema Tripathi, IAS Managing Director, COMFED, Patna, Bihar
9. Dr. Khalid Mirza Director, Higher Education, Govt. of Bihar
10. Dr. M K Tiwari Regional Officer, AICTE, Northern Regional Office, Kanpur
11. Prof. G. Krishnamurthi Sr. Professor and Dean, DMI
12. Prof. Piyush Kumar Singh Assistant Professor, DMI

Member Secretary

12. Prof. KV Raju Director, DMI

** As of March 31, 2016*





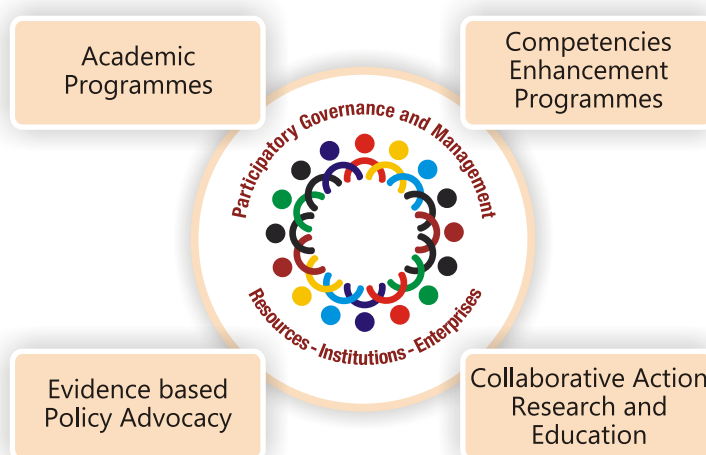
1. Origin and Mission

Development Management Institute (DMI) was set up as an autonomous institution in February 2014 pursuant to a desire of the Government of Bihar to establish a High Performing Knowledge Institution (HPKI), and arising from recognition of the growing need for development management professionals. The rationale of DMI is best captured in its mission **"To empower and usher in participatory governance and management of institutions, enterprises and resources for enhancing livelihoods and generating sustainable development"**.

DMI endeavours to empower grassroots through:

- Creation of a cadre of Development Management professionals through its Post-graduate Diploma Programmes, Certificate Programmes and courses, and the Fellow Programme;
- Enhancement of professional and personal competencies of Development Management Professionals through sustained short-duration Competencies Enhancement Programmes (CEP);
- Engagement in networked, trans-disciplinary Action Research and Policy Advocacy, through the following Collaborative Action Research and Education (CARE) centres:
 - Livelihoods and Well-being
 - Collectives and Commons
 - Leadership and Governance
- Orientation of Vision, Values and Leadership Practices towards Good Governance, by working with organisations and institutions at different levels.

As depicted in the picture, DMI conducts Academic Programmes, Competencies Enhancement Programmes, Collaborative Action Research and Education, and Evidence based Policy Advocacy activities to strengthen participatory governance and management of institutions, enterprises, and resources.



DMI Programmes and Activities

During the first two years, DMI has diligently carried out the basic steps to take it towards its mission. This report delineates the efforts of DMI during the year 2015-16 towards the realisation of its mission.

2. Support from Government of Bihar

2.1 Grants for establishing DMI

The Government of Bihar released a total sum of ₹ 26 cr. to DMI during the financial year 2015-16. DMI utilised these funds for payment of salaries, allowances and benefits, acquisition of assets and for meeting other expenditure including addition of ₹ 8.5 cr. to Corpus Fund and ₹ 4 cr. to Scholar Support Fund. The total Corpus Fund as on 31 March 2016 is ₹ 13.5 cr., and Scholar Support Fund is ₹ 8 cr.

The Government of Bihar has allocated ₹ 28.085 cr. to DMI for the financial year 2016-17 (Source: Document of Bihar Government, Finance Department, 42-Rural Development Department, NON-PLAN EXPENDITURE & PLAN, 2016-17).

The following table presents a summary of the actual utilisation vis-a-vis funds released during the period 2014-16:

(Figures in ₹)

Budget Head	2014-15			2015-16		
	Grant Received	Utilised till 31.03.2015	Balance on 31.03.2015	Amount Received	Utilised till 31.03.2016	Balance on 31.03.2016
	(A)	(B)	(C=A-B)	(E)	(F)	(G=C+E-F)
Salaries, allowances and benefits	2,50,00,000	85,43,742	1,64,56,258	3,25,00,000	1,90,52,532	2,99,03,726
Acquisition of assets	4,50,00,000	1,31,53,506	3,18,46,494	5,85,00,000	4,71,06,482	4,32,40,012
Other Expenditure	13,00,00,000	3,12,79,501	87,20,499	16,90,00,000	4,78,88,335	48,32,164
Corpus Fund		5,00,00,000			8,50,00,000	
Scholar Support Fund		4,00,00,000			4,00,00,000	
Total)	20,00,00,000	14,29,76,749	5,70,23,251	26,00,00,000	23,90,47,349	7,79,75,902

DMI expresses its gratitude to the Rural Development Department and Finance Department of the Government of Bihar for facilitating the availability of funds.

2.2 Land for building permanent Campus

The Institute has been envisioned to emerge as a High Performing Knowledge institution (HPKI) with world-class infrastructure in the field of Development Management and aims at developing professionals critically required for Bihar and elsewhere. Keeping the activities envisaged for Collaborative Action Research and Education (CARE) Centres, the Government of Bihar had agreed to provide about 50 acres of land. The land that the Government had allotted earlier is under dispute and its transfer to the Institute is held up as a result. The Government is considering the allotment of alternative sites for a permanent campus for DMI.

2.3 Space for DMI

During the year under review, the Institute shifted to Udyog Bhawan, Second Floor, where it got its classrooms, library, seminar hall, computer centre, offices and all other facilities ready as per AICTE requirements for conducting the PGDM programme.

DMI expresses its gratitude to Bihar Industrial Area Development Authority (BIADA) and Industries Department for allotting space on rental basis in Udyog Bhawan, Patna for DMI to function.



DMI, Udyog Bhawan Transit Campus

3. Facilities for DMI Activities

- 3.1** The Institute shifted the Knowledge Centre (Library) established during the previous year at DNS-RICM Campus to the new campus at Udyog Bhawan. During the year under review, substantial additions were made to the Knowledge Centre by way of books, journal article databases, print journals, magazines, and newspapers. In addition, the operations of the Knowledge Centre have been totally automated with the procurement and installation of RFID system compatible with the existing Library Management software (LIBSYS 7). The RFID system comprises a console for borrowing books, a scanner for search of books, a security gate to prevent unauthorised removal of books and a drop box for return of books. The Knowledge Centre currently hosted as on (March 31, 2016) 4,261 volumes of books comprising 4,067 titles, 7 journal article databases (EBSCO, ProQuest, Emerald, J-Gate, EPW, Prowess, State of India), 14 Indian and international journals in print format, 13 magazines and 13 newspapers. In addition, it also houses 108 CDs and DVDs.



Knowledge Centre, DMI

3.2 The Institute has provided all its faculty members and PDM participants laptop computers and associated facilities like wi-fi connectivity and printers.

3.3 The Institute has also taken on lease ten flats for faculty accommodation and for a guest house for visiting Faculty at Bailey Green Apartments, near Rupaspur Thana, Patna. A fully operational kitchen facility has been established to take care of the needs of visiting/ guest faculty. This kitchen also caters to the needs of a few resident faculty members on payment basis, as and when availed. All residential flats are equipped with necessary furniture and internet connectivity.

3.4 The Institute has established hostel facility with double occupancy accommodation for 40 PDM participants with good quality furniture, fitness equipment, well-equipped discussion rooms and common rooms, a functional mess facility, internet access, etc. in two floors of space hired in Ganesh Complex, Kadam Kuan, Patna.



DMI Hostel

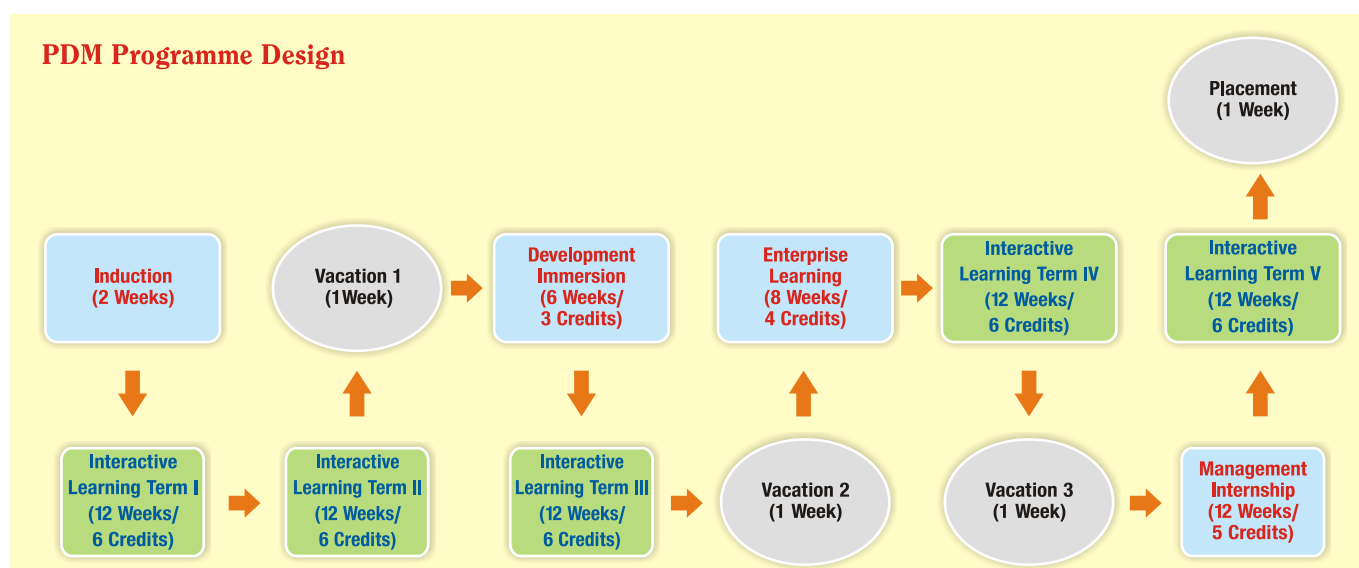


4. Post-Graduate Programme in Development Management (PDM)

4.1 The pioneering activity of DMI is its two-year full-time Post-graduate Programme in Development Management (PDM) which aims at preparing its graduates to achieve:

- Personal growth by widening perspectives through interactive learning from perspective-building, foundational, functional and integrative courses, and enriched by learning by doing and reflective dialoguing process; and
- Transformation into Development Management Professionals by exposure to contextual realities during immersion, enterprise learning and management internship segments, and learning from first-hand living and working in situ.

PDM curriculum primarily focuses on imparting competencies necessary for participatory governance and management of resources, enterprises, institutions and interventions. The curriculum is a fine mix of interactive learning and hands-on experiential learning distilled in the crucible of praxis in the diverse institutional partner network of DMI, by interspersing mutually reinforcing interactive and experiential learning at regular intervals, as shown in the structure given below:



4.2 PDM Activities - 2015-16

4.2.1 PDM 2014-16 Batch

DMI launched the two-year Post-Graduate Programme in Development Management (PDM) as mandated by the Government on July 7, 2014 with the approval of the All India Council for Technical Education (AICTE), with an intake of four students. Out of them, one completed her studies successfully and has taken up employment with **Delhi Commission for Women** where she did her Management Internship. One student fell ill at the beginning of Development Immersion (DI) and could not proceed further; he has re-joined the programme along with the second batch at the point at which he had discontinued earlier. Two more students could not perform satisfactorily during their fourth term and have re-joined the programme along with the second batch from fourth term.



Sakshi Saurabh, the first graduate of PDM 2014-16, receiving Provisional Certificate

4.2.2 PDM 2015-17 Batch

Twelve students were admitted to the PDM programme in May/ June 2015. The batch had a four-week long **remedial programme** in June 2015, comprising eighty sessions on communication skills, twenty-two sessions on computer skills and twenty on quantitative skills.

The **remedial programme** was followed by **induction programme** spread over the following two weeks, during which the students were taken to Gujarat for exposure to AMUL, Tribhuvandas Foundation (TF), Indian Dairy Machinery Company, Mother Dairy (Gandhinagar) and SEWA. They had extensive interactions with Prof. Tushaar Shah during their stay in Anand and visited Thamna, a village where International Water Management Institute (IWMI) has been conducting numerous experiments on the use of solar energy under a TATA-IWMI project. They also stayed in villages in Anand district.



Visit to village Thamna, Gujarat



Visit to Mulkanoor, Telangana

The first and second interactive learning terms were conducted as per schedule. Three out of twelve students enrolled for the programme had to be advised to withdraw from the programme due to their poor academic performance. They have been given the option of resuming their studies with the subsequent batch right from the remedial module; out of them, one has since re-joined already with PDM 2016-18 batch.

The students were attached to Mulkanoor Cooperative Rural Bank and Marketing Society Ltd., (MCRB) for their Development Immersion (DI) segment. During the first week, they were exposed to all units and operations of the Society and visited

Mulkanoor Women's Cooperative Society, village milk collection centres, seed processing unit, cooperative bank, etc. They had extensive discussions with the officials of the Society at different levels, including their Chairman. Afterwards, they stayed in five different places, as shown below, for a deeper understanding of local society, resources, production and marketing systems, local economy and enterprise, polity, development schemes and their planning and implementation, the local institutions and their contribution to local development, and other issues:

Participants	Village	District
○ Amber Kumar ○ Swarn Saurabh	Errabelli	Karimnagar
○ Sonali Anand ○ Shreya	Mutharam	Karimnagar
○ D. Manvitha Redddy ○ Monalisa	Gangadevipalli	Warangal
○ Amit Kumar ○ Manjeet Singh	Kothapally	Karimnagar
○ Abhilash Singh ○ Purushottam Kumar	Bheemadevarapally	Karimnagar

On their return from DI, the participants made presentations and submitted their reports for evaluation. In addition, they also organised a poster presentation on their learning during DI at the **Second Foundation Day Symposium** held at Rajgir International Convention Centre during February 13-14, 2016.

The students have completed their third Interactive Learning Term and their



Poster Presentation during Foundation Day Symposium 2016

Enterprise Learning Segment in the following organisations :

- Poultry producers' collective enterprises promoted by PRADAN in Gumla in Jharkhand and Kesla in Madhya Pradesh;
- Vasundhara Agri Horti Producer Company Ltd. (VAPCOL) promoted by BAIF;
- Paayas Milk Producer Company Ltd. promoted by NDDDB Dairy Services; and
- Amalsad Vibhag Vividh Karyakari Sahakari Khedut Mandali Ltd.

The first two batches had the benefit of learning from several experts during their interactive learning terms.

- Mr. Anindo Banerjee, (Director, Internal Programme Initiatives, PRAXIS, Patna), conducted a workshop on "Participatory Rural Appraisal (PRA)" and field research.
- Prof. Mala Narang Reddy, TERI University, introduced the students to social research methods.
- Mr. P K Sriraman, Helpage India designed the course 'Managerial Accounting' and delivered eighteen sessions.
- Mr. R K Anil, COO, Chhattisgarh State Livelihoods Mission, designed and delivered the course 'Development Administration'.
- Prof. Vaibhav Bhamoriya of Indian Institute of Management Ahmedabad designed and delivered the course on Marketing Management.
- Dr. Raghav Rajagopalan from Chennai designed and delivered the course 'People and Performance'.
- Prof. M V Shiju, TERI University and Mr. Sunil Jha, UNICEF Consultant jointly designed and conducted the course 'Legal and Regulatory Environment'.
- Prof. Anuj Sharma, CIMP designed and conducted the course 'Management Information Systems'.
- Mr. Ashutosh Dutt, and alumnus of MICA and a freelance consultant, designed and conducted the course 'Marketing Research and Analytics'.

4.2.3 Scholar Support

DMI acknowledges with gratitude the receipt of ₹ 11.75 lakhs from COMFED as Scholar Support Fund during 2015-16 towards reimbursement of support extended for the students of PDM 2015-17. The details of award of Scholar Support are shown in following tables :

Scholar Support – PDM 2015-17, Term II

Sl. No.	Student ID No.	Name	GPA in Term I	Scholarship Granted Based on Term I Performance (%)	Scholar Support Fund earned by the student (Rs.)
1	02 PDM001	Abhilash Singh	2.4	50%	63,500
2	02 PDM002	Amit Kumar	2.5	50%	63,500
3	02 PDM003	Daggolu Manvitha Reddy	2.3	25%	31,750
4	02 PDM004	Gaurav Kumar	1.7	-	-
5	02 PDM005	Kumar Ankit	1.8	-	-
6	02 PDM006	Manjeet Singh	3.1	100%	1,27,000
7	02 PDM007	Monalisa	2.9	75%	95,250
8	02 PDM008	Purushottam Kumar	2.0	-	-
9	02 PDM009	Rahul Kumar	1.8	-	-
10	02 PDM010	Shreya	2.1	-	-
11	02 PDM011	Sonali Anand	2.8	75%	95,250
12	02 PDM012	Swarn Saurabh	2.1	-	-
				Total	4,76,250

Scholar Support – PDM 2015-17, Term III

Sl. No.	Student ID No.	Name	GPA in Term I	Scholarship Granted Based on Term I Performance (%)	Scholar Support Fund earned by the student (Rs.)
1	02 PDM001	Abhilash Singh	2.820	75%	95,250
2	02 PDM002	Amit Kumar	2.756	75%	95,250
3	02 PDM003	Daggolu Manvitha Reddy	2.303	25%	31,750
4	02 PDM006	Manjeet Singh	2.738	75%	95,250
5	02 PDM007	Monalisa	2.924	75%	95,250
6	02 PDM008	Purushottam Kumar	2.138	-	-
7	02 PDM010	Shreya	2.381	50%	63,500
8	02 PDM011	Sonali Anand	2.474	50%	63,500
9	02 PDM012	Swarn Saurabh	2.291	25%	31,750
10	01 PDM001	Amber Kumar	3.059	100%	1,27,000
				Total	6,98,500

4.2.4 PDM 2016-18 Batch

In order to attract a wider cross-section of students from different streams and regions, the eligibility requirement was extended to satisfactory performance in any of the AICTE-approved Management Admission Tests, viz. CAT, XAT, MAT, CMAT, ATMA, and GMAT, as approved by the Board of Governors of the Institute at its meeting held on August 7, 2015. The four stage admission process comprising the Management Admission Test, Development Management Aptitude Test, Group Exercise, and Personal Interviews has been under progress.

4.2.5 PDM Coordination

The PDM programme is administered by the PDM Committee, comprising the Faculty members responsible for various activities of PDM Management, and the Dean who lends support to the members for the process. The PDM Committee for the year 2015-16 comprised the following members:

- | | | | |
|----|------------------------|----|-------------|
| a. | Prof. E N Reddy | .. | Coordinator |
| b. | Prof. G. Krishnamurthi | .. | Member |
| c. | Prof. Aditi Thakur | .. | Member |
| d. | Prof. Piyush Singh | .. | Member |

Prof. E N Reddy looked after the overall Coordination and was also in charge of Experiential Learning Components and Placement. Prof. G. Krishnamurthi looked after sourcing and allocation of faculty resources, coordination for evaluation, and feedback. Prof. Aditi Thakur was the Admissions Coordinator, and looked after all admissions-related activities. Prof. Piyush Kumar Singh was the Programme Facilities Coordinator, and looked after the development and management of all infrastructural facilities required for all programmes of the Institute, including the Hostels, Guest House and Faculty / Staff quarters, transport, and boarding facilities.

5. Certificate Programme in Development Management

5.1 Catalysing Endogenous Development

The Board of Governors approved, at its third meeting held on August 07, 2015, certificate programme of 2-3 months' duration on 'Catalysing Endogenous Development' to orient management professionals to sustainable livelihoods and well-being, and to develop their competencies (comprising knowledge, skills, and attitude) necessary to realise sustainable development goals by working at multiple levels with local communities. The participants will develop their competencies in the programme through interactive classroom learning modules interspersed with experiential learning modules, consisting of contextualised learning activities and exploratory study visits. During these modules, the CP-CED participants are expected to (i) acquire the knowledge and skills for understanding of socio-economic, political, and cultural factors; (ii) discover transformation potential; and (iii) provide enabling support for the communities to design appropriate endogenous development interventions and unleash their potential through their own participation in the process and manage transition. In addition, the participants will acquire insights about their self-transformation resulting in changes in motivation, outlook, and orientation to achieve desired impacts and outcomes.

The Certificate Programme is designed to be open to graduates in any discipline, either working at present or desiring to work in future in Government and non-government development and support organisations. Specifically, personnel from the following organisations can benefit from the programme:

- Government Departments, specially, of Rural Development, Urban Development, Local Governance Institutions, Planning, Agriculture and Cooperation, Social Welfare, etc.;
- Civil Society Organisations including CSR initiatives by public and private sector organisations;
- Community Enterprises including cooperatives and other member-based organisations;
- Development Support Organisations including those providing technical/ financial assistance to other development organisations.

The certificate programme is being planned for a batch of 25-30 participants.

In pursuance of the approval of the Board, a curriculum design and development workshop was conducted on January 18, 2016. Based on the suggestions received from the participants in the workshop, the structure of the programme and broad contours of the modules have been finalised. The development of the contents and specific learning materials for different modules jointly with identified resource persons is in progress. With additional space now available, facilities for conduct of the programme are being readied. Lodge and board facilities for the programme participants are planned to be developed before launch of the programme.



6. Collaborative Action Research and Education (CARE) Centres

6.1 Community Based Micro- Finance for Financial Inclusion (CBMF)

During the year under review, the Institute conducted its first International Certificate Course on 'Community-Based Microfinance' at its Udyog Bhawan Campus in collaboration with Coady International Institute (CII) at St Francis Xavier University, Antigonish, Canada and MAS/Sadhikaratha, Hyderabad. Coady is a unique, world class leader in community - based, citizen - driven development education.



The programme was attended by 18 participants - four international participants (3 from Nigeria and one from Ethiopia) and 14 Indian nationals. This programme used to be conducted by CII and APMAS in Hyderabad till last year. DMI provided the space and facilitation support during the year to the other two institutions for conducting the programme in Patna. The feedback received from the participants was positive as regards the design, contents, and conduct of the programme including field visits and about arrangements for lodging and boarding.

Profs. EN Reddy and Jaya Kritika Ojha coordinated the programme.



CBMF Programme

6.2 End Term Evaluation of AKRSP (I) Project

Aga Khan Rural Support Programme India [AKRSP (I)] has commissioned DMI for the end-term evaluation study of the project "Water for Good Health and Sustainable Livelihood" being implemented in four blocks of Muzaffarpur and Samastipur districts under EC funding.



Focus Group Discussion



Interaction with Community Leader

A team of DMI faculty members consisting of Profs. G. Krishnamurthi, E. N. Reddy, Jaya Kritika Ojha, and Amrita Dhiman is pursuing the project.



Field visit : Water for Good Health and Sustainable Livelihood Project, Muzaffarpur and Samastipur, Bihar

6.3 Competencies Enhancement Programme for Child Protection Functionaries

DMI and UNICEF (Bihar Office) are in collaboration to conduct CEPs for Child Protection functionaries, following an MOU signed between the two institutions. The programme aims at building a cadre of child protection workforce for strengthening the protective framework for children. It expects to result in all Child Protection (CP) Functionaries equipped with the following competencies:

- Knowledge of child-friendly perspectives grounded in the ideas of equity and inclusion, and Skills and attitude necessary for handling issues related to behaviour of children with sensitivity to the children's needs and their development;
- Enhanced Quality of Institutional Care Services for Children in the Child Care Institutions in the State;
- Improved programme management skills for effective management of child-care institutions and organisations, and efficient management of human and non-human resources in line with the needs of such institutions;
- Knowledge of Social protection schemes / programmes and statutes / policies concerning vulnerable children and / or their families and skills for establishing linkages / convergence to strengthen / rehabilitate them;
- Skills for effective self-management and management of teams, and capacity to assume leadership roles for the achievement of the requisite goals related to their functions and responsibilities as CP Functionaries.



Consultative Colloquium for Curriculum Development

As a prelude to the design of the CEPs, a team of faculty members from the Institute visited three centres under DSW to develop a first-hand understanding of their functioning and the issues in managing them. The visit was undertaken on November 28, 2014, and covered an after-care home for women above 18 years of age, children's home for girls below 18 years of age, and an observation home for boys (juvenile) up to the age of 18.



As a next step, to understand the competency gaps of CP functionaries, DMI conducted an exploratory needs assessment workshop on April 15, 2015 attended by thirty-three CP functionaries. The exploratory workshop brought out, though tentatively, the knowledge, skills and attitudes that require enhancement among the functionaries.

Subsequently, the Institute organised a two-day Consultative Colloquium for Curriculum Development during June 24-25, 2015 attended by experts drawn from across the country to examine the adequacy of the modules intended for strengthening the competencies of CP functionaries at multiple levels. In particular, the deliberations at the workshop covered following:

- Development of a common vocabulary appropriate to the competencies enhancement needs of the CP functionaries, so that they share a common understanding of the various perspectives;
- Examination of the modules under the various themes outlined above, with a view to identify the gaps and eliminate repetition/ redundancies;
- Broad identification of the perspectives, tools, techniques, and applications for each of the modules so finalised;

Among others, the following contributed to the discussions and group work at the colloquium:

- Ms. Arlene Manoharan, Programme Head, Centre for Child and the Law, NLSIU, Bangalore
- Dr. Naina Athale, Ex-Faculty, TISS
- Ms. Anita Ratnam, Executive Director, Samvada, Bangalore
- Mr. David Raj, Consultant, UNICEF (AP Unit)
- Prof. Daisy Narain, Former Chairperson, CWC, Patna
- Prof. Vinay Kanth, Professor, Patna University
- Mr. Suresh Kumar, State Coordinator, Prayas
- Mr. Sayed Mansoor Qadri, Child Protection Specialist, UNICEF
- Ms. Tannistha Datta, Child Protection Specialist, UNICEF
- Mr. Satyendra Kumar, Director, Bihar State Operations, Centre for Social Equity and Inclusion

As requested by UNICEF, a detailed calendar of programmes and activities for the development of a cadre of Child Protection Functionaries was developed for the twelve-month period July 2016 - June 2017 and submitted to their Bihar office for approval by PCA Committee. (A formal agreement has since been concluded between DMI and UNICEF on October 26, 2016. The programme has been initiated on November 1, 2016.)

6.4 Mentoring Support to PMRD Fellows

In collaboration with TISS, DMI is providing mentoring support and contributing to training of PM Rural Development Fellows in participatory governance and development management. The Institute organised an interaction meet on July 30, 2015 at its DNS-RICM campus. Ten presentations were made by the Fellows in groups, covering a wide spectrum of issues. Chairman and Director along with Shri Eklavya Prasad served as mentors to PMRD Fellows and assisted Secretary, RDD, BRLPS, and TISS in reviewing and assessing performance.



7. Second Foundation Day Symposium

The Institute conducted its Second Foundation Day Symposium at Rajgir International Convention Centre during February 13-14, 2016. The Symposium was organised on the theme 'Collectives and Commons for Well-being', and was conducted under the following sub-themes:

- Collectives for Well-being
- Commons for Well-being
- Pursuit of Well-being

A total of 57 invitees participated in the Symposium covering eminent academics, Govt. representatives, experts, and representatives of NGOs. In addition, twenty students of Nalanda University, faculty, staff and Board members of DMI also participated in the event. A total of 27 presentations were made, covering a range of issues on the theme.

The function was inaugurated by Prof. Jaya Indiresan. In her address, she explained the multiple perspectives of 'well-being'; in particular, she emphasized how a person's perception of his experience against expectations heightened or reduced her/his sense of well-being.

Shri Anup Mukerji, Chairman, released a special edition of the book 'Catalysing Cooperation'. Shri Arvind Kumar Chaudhary, Secretary, Rural Development Department (Govt. of Bihar) released another book 'Making Farmers' Cooperatives Work'. Prof. Tushaar Shah, author of both these books, delivered the keynote address and stated that the design of cooperative organisations was critical to their long-term success, and urged DMI to inculcate 'design thinking' among its students.



Releasing a special edition of book 'Catalysing Cooperation' and 'Making Farmers' Cooperatives Work'

8. Other Academic Events

8.1 Celebration 19-26 November, 2015

The institute organised 19-26 November celebration in honour of Peter Drucker (Nov. 19, 1909 - Nov. 11, 2005) and Dr. Varghese Kurien (Nov. 26, 1921 - Sept. 09, 2012). PDM students, faculty and staff shared the thoughts, contributions and achievements of these two great minds in a series of daily seminars conducted during the period November 19-26, 2016.



Peter Drucker, popularly known as the 'Father of Modern Management'

was born in Vienna, Austria on November 19, 1909. A PhD in international law from Frankfurt University (1932), Drucker was a professor of management in New York University for 21 years, and later became the Marie Rankin Clarke Professor of Social Science and Management at Claremont Graduate School (which was later renamed the Peter F. Drucker Management Centre). The Peter F. Drucker Foundation for Non-profit Management (today called the Frances Hesselbein Leadership Institute) was established in 1990. Drucker has either invented or influenced virtually every part of management theory, and was a phenomenon by himself, having been a thinker, strategist, writer, consultant, and teacher.



Celebration 19-26 November, 2015

Dr. Verghese Kurien, popularly known as 'The Milkman of India', and an institution-builder was born on November 26, 1921. Verghese Kurien became a legend in his lifetime for building a cooperative movement that transformed the lives of poor farmers while making India self-reliant in milk production. He had 17 honorary doctorates from universities in India and abroad. At the time of his death he was Chancellor, University of Allahabad (since April 17, 2006), Member, Board of Trustees, Lal Bahadur Shastri National Memorial Trust, New Delhi (since 1986), and Member, Advisory Committee, South Asian Network on Fermented Foods - SAN FOODS (since 2004). He was Founder Chairman of the National Dairy Development Board (1965-1998), the Gujarat Cooperative Milk Marketing Federation Ltd, Anand (1983-2006), the National Cooperative Dairy Federation of India Limited (1986-1993), (1995-2000), and (2003-2006), and the Board of Governors, Institute of Rural Management, Anand (1979-2006), amongst several other posts he held in his working life.

8.2 Workshop on Holistic Stress Management and Self-Development

Dr. B M Palan, Founder, Institute for Mind-Body Healing, Healthy Living & Realizing Human Potential, conducted a three-day workshop at DMI on 'Holistic Stress Management and Self-development (Tranceformation)' during the period September 4-6, 2015 at the invitation of the Institute. The workshop was the first part of the two-part programme. Sixteen PDM Participants (from both batches), nine Faculty members, seven staff members, a visiting Faculty member (Mr. Sunil Jha) and a representative of BRLPS (Mr. Rajesh Parimal) attended the workshop.



Workshop on Holistic Stress Management and Self-Development



9. Participation in Conferences and Workshops

The participation of DMI Faculty in academic events is presented in the following table:

Workshop/ Conferences	Host Organisation	Date	Faculty Participated
International Symposium on Combating Climate Change in CAO Megacities	South Asian Forum for Environment	22 Apr, 2015	KV Raju G Krishnamurthi Piyush Kumar Singh
IGC sponsored Economic Survey Outreach	Ministry of Finance, Govt. of India	29 May, 2015	Surya Bhushan
World Bank-SLACC- Workshop	World Bank Sponsored	24-25 Jun, 2015	KV Raju Surya Bhushan
Making Patna a Better City: Improving Urban Planning, Livelihoods, Inclusiveness and Public Safety	IHD-Delhi, ADRI	09 Aug, 2015	Surya Bhushan
The Agony of Rivers:Floods in Bihar	ICIMOD and Megh Pyne Abhiyaan	03 Sep, 2015	KV Raju Surya Bhushan
Social Entrepreneurship	BIMTECH-Gr. Noida	11 Sep, 2015	Surya Bhushan Piyush Kumar Singh Jaya Kritika Ojha Aditi Thakur
International Conference on Education as a Driver for Sustainable Development Goals	CEE, Ahmedabad	11-13 Jan, 2016	KV Raju G Krishnamurthi EN Reddy Surya Bhushan Amrita Dhiman
Commodity Trading in Bihar	SEBI, Patna	22 Jan, 2016	Surya Bhushan
State Level Conference on Cooperatives	BISCOMAUN Patna	27 Feb, 2016	KV Raju EN Reddy Sridhar Telidevara Amrita Dhiman Piyush Kumar Singh
Stakeholder Consultation Workshop on BAGRI Inception Report	BAGRI -TAST Patna	14 Mar, 2016	KV Raju EN Reddy Surya Bhushan
International Conference on Development And Growth : Experience & Theories	ADRI, Patna	26-30 Mar, 2016	G Krishnamurthi Sridhar Telidevara Piyush Kumar Singh Surya Bhushan



10. Support to other Organisations

NRLM: Prof. KV Raju and Prof. Jaya Kritika served as national resource persons in conduct of capacity building programmes of NRLM.

BRIPS: Prof. Sridhar served as panel member in Performance Assessment of Young Professionals, employed by Jeevika.

Helvatas, Bhutan: Ministry of Agriculture and Forests (MoAF), Royal Government of Bhutan (RGOB) and HELVETAS Swiss Intercooperation (HSI) commissioned a Mission Team consisting of Prof. Fritz Schneider as Team Leader, Prof. KV Raju and Mr. Nidup Peljor as Mission Members to conduct Strategic and Organisational Review of Rural Development Training Centre (RDTC) that was established in 2003. The Mission Team has submitted its report.

IDA: At the request of IDA, Bihar, DMI conducted a written test for selection of Accountant and submitted the merit list for further action.

PRADAN: PRADAN and DMI jointly conducted a training programme for the staff of Jeevika on 'Perspectives Building for Livelihoods Promotion' at Bodh Gaya during May 16-21, 2016.

11. Human Resources

DMI recruited four faculty members and three non-teaching staff during the period April 2015 - March 2016. The following tables provide details of Faculty and Staff members on the rolls of the Institute as on March 31, 2016:

A. Faculty

Sl. No.	Name	Position Recruited for	Date of Joining
1	Prof. KV Raju	Senior Professor and Director	April 8, 2014
2	Prof. G. Krishnamurthi	Senior Professor and Dean	May 30, 2014
3	Prof. Aditi Thakur	Assistant Professor	Sep. 4, 2014
4	Prof. EN Reddy	Associate Professor	March 9, 2015
5	Prof. Jaya Kritika Ojha	Assistant Professor	April 10, 2015
6	Prof. Surya Bhushan	Associate Professor	May 1, 2015
7	Prof. Sridhar Telidevara	Associate Professor	October 3, 2015
8	Prof. Amrita Dhiman	Assistant Professor	January 4, 2016

B. Staff

Sl. No.	Name	Position Recruited for	Date of Joining
1	Ms. Nidhi Kumari	Secretary (Library)	Sep. 15, 2014
2	Mr. Suman Kumar	Manager (Administration)	Sep. 26, 2014
3	Mr. Anil Kumar	Secretary (Accounts)	Oct. 8, 2014
4	Mr. Abhay Avichal	Secretary (Academic Programmes)	Oct. 8, 2014
5	Mr. Akshay Kamal Pandey	Secretary (Faculty)	June 22, 2015
6	Mr. Shashi Shankar	Assistant (Purchase and Stores)	July 14, 2015
7	Mr. Rakesh Kumar	IT Maintenance Assistant	Aug. 1, 2015



DMI faculty, staff and PDM participants

As in the last year, DMI invited a number of Development Practitioners, Academics, and Administrators to share their experience and learning with the PDM participants, Faculty members and Staff during the current year also. The invitees include:

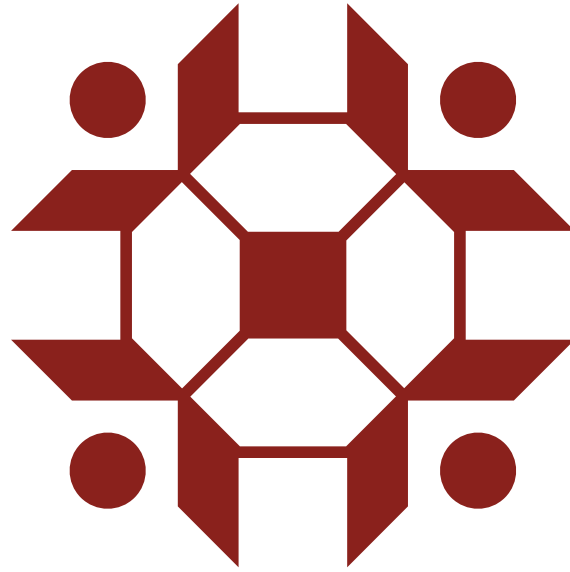
- a. Shri Anindo Banerjee, Director, PRAXIS
- b. Prof. Trilochan Sastry, Professor, Indian Institute of Management, Bangalore (IIMB)
- c. Prof. Mala Reddy, TERI University
- d. Prof. Raghav Rajagopalan, Former Visiting Faculty at IRMA
- e. Shri RK Anil, Development Management Professional with work experience in URMUL Trust, SERP, UNDP, etc., and currently with Chattisgarh State Rural Livelihood Mission
- f. Shri Sunil Jha, Consultant, UNICEF
- g. Prof. MV Shiju, TERI University
- h. Prof. Anuj Sharma, Faculty at CIMP
- i. Prof. Anjan Mukherji, Country Director, IGC India-Bihar Programme, Patna
- j. Ms. Manoshi Mitra, Senior Social Development Specialist, Asian Development Bank
- k. Ms. Giovanna Gioli, Livelihood Adaptation Specialist, ICIMOD
- l. Ms. S M Wahid, Coordinator, Koshi Basin Initiative, ICIMOD
- m. Ms. Pranita Bhushan Udas, Gender, Water and Adaptation Specialist, ICIMOD
- n. Mr. D.K. Srivastava, Managing Director, Mithila Dugdh Utpadak Sahkari Sangh Ltd.
- o. Mr. Sanjay Sinha, Business Head (Bihar and Jharkhand), Hindustan Media Ventures Ltd.
- p. Mr. Anit Mukherjee, Policy Fellow, Centre for Global Development
- q. Ms. Nikila Kapur, Policy and Training Associate, J-PAL South Asia at IFMR
- r. Mr. PS Sodhi, Centre for Environment Education, Delhi
- s. Dr. Dinesh Awasty, Former Director, Entrepreneurship Development Institute
- t. Mr. Shailendra Kumar Singh, SOIL
- u. Mr. Paramveer Singh, Consultant, World Bank
- v. Mr. Debaraj Behara, Consultant, World Bank
- w. Dr. B M Palan, Samatvam Institute for Mind - Body Healing, Healthy Living & Realizing Human Potential



Audit Report 2015 - 2016

Statutory Audit Report

Financial Year 2015 - 16



DMII

सुविद्या सुविनियोगात् सुविकासः

M/s. Chanakya Ashok & Co.
502, Hem Plaza, Fraser Road,
Patna 800 001



AUDITOR'S REPORT.

IN CASE OF:

**Development Management Institute Society.
Second Floor, Udyog Bhawan,
East Gandhi Maidan, Patna-800004**

We have audited the attached Balance Sheet of Development Management Institute Society, Patna as at 31/03/2016 and the Income and Expenditure Account of the Society for the periods from 01/04/2015 to 31/03/2016. These financial statements are the responsibility of the society's management. Our responsibility is to express an opinion on these financial statements based on our audit.

We conducted our audit in accordance with auditing standards generally accepted in India. Those standards require that we plan and perform the audit to obtain reasonable assurance about whether the financial statements are free from material misstatements. An audit includes examining, evidence supporting the amounts and disclosure in the financial statements. An audit also includes assessing the accounting principles used and significant estimates made by management, as well as evaluating the overall financial statement presentation. We believe that our audit provides a reasonable basis for our opinion.

We report as under:

1. Subject to our comments appearing in Part A of the annexure hereto:
 - a. We have obtained all the information and explanations which to the best of our knowledge and belief were necessary for the purpose of our audit;
 - b. In our opinion, proper books of account, as required by law have been kept by the society, so far as appears from our examination of these books;
 - c. The Balance Sheet and Income and Expenditure Accounts dealt with by this report are in agreement with books of account;



Offices:

**Patna: 409 Hem Plaza, Fraser Road, Patna-800001, Ph.: 0612-2202876, 9334213188;
archana@leomanagement.in**



Chanakya Ashok & Co.
Chartered Accountants

- d. In our opinion, the Income and Expenditure Accounts and Balance Sheet comply with the Accounting Standards issued by the Institute of Chartered Accountants of India so far as they are applicable to the society;
- e. In our opinion and to the best of our information and according to the explanations given to us, the said accounts give a true and fair view in conformity with the accounting principles generally accepted in India;
 - i. In the case of the Balance Sheet of the state of affairs of the society as at March 31st, 2016.
 - ii. In the case of the Income and Expenditure Accounts of the unit for the period from 01/04/2015 to 31/03/2016.

Date: 07/06/2016
Date: Patna

For Chanakya Ashok & Co.
Chartered Accountants.
ICAI Reg. No.012680C



CA Archana Sharma
Partner.
Membership No:401921

Offices:

Patna: 409 Hem Plaza, Fraser Road, Patna-800001, Ph.: 0612-2202876, 9334213188;
archana@leomanagement.in





Annexure to the Auditors' Report.
(As referred to in our report of even date in case of Development Management Institute Society.)

- A. Discrepancies affecting the "true and fair" view of the state of Affairs as on 31/03/2016 and the deficient for the Audit Period:-

Discrepancies	Remarks
Nil	Nil

- B In addition to the financial statements covered by the report the following statements are also enclosed:

01. Trial Balance covering the periods from 1st Apr 2015 to 31st March 2016.
02. Cash Flow Statement as on 31st March 2016.



Offices:

Patna: 409 Hem Plaza, Fraser Road, Patna-800001, Ph.: 0612-2202876, 9334213188;
archana@jeomanagement.in

DEVELOPMENT MANAGEMENT INSTITUTE SOCIETY
 Second Floor, Udyog Bhawan Campus, East Gandhi Maidan, Patna-800004

BALANCE SHEET AS AT 31-03-2016

		Rupees	
SOURCES OF FUNDS	Schedule	31.03.2016	31.03.2015
UNRESTRICTED FUNDS			
Corpus	1	602,59,988.00	156,99,798.00
General Fund	2	112,49,298.68	147,71,535.59
Designated/Earmarked Funds	3	2218,25,439.85	900,00,000.00
RESTRICTED FUNDS	4	731,43,738.00	483,02,752.00
Accumulated Depreciation Fund		114,95,798.07	12,25,124.41
LOANS/BORROWINGS	5		
Secured		-	-
Unsecured		-	-
CURRENT LIABILITIES & PROVISIONS	6	34,51,151.00	18,21,933.00
TOTAL		3814,25,413.60	1718,21,143.00
APPLICATION OF FUNDS			
FIXED ASSETS			
Tangible Assets	7	602,59,988.00	156,99,798.00
Intangible Assets		-	-
Capital Work-In-Progress		-	-
INVESTMENTS	8		
Long Term		2150,00,000.00	900,00,000.00
Short Term		647,00,000.00	400,00,000.00
CURRENT ASSETS	9	355,12,930.60	237,66,521.00
LOANS, ADVANCES & DEPOSITS	10	59,52,495.00	23,54,824.00
TOTAL		3814,25,413.60	1718,21,143.00
Notes On Accounts	22	-	-

For Development Management Institute Society

In terms of our attached report of even date
 For M/s Chanakya Ashok & Co.
 Chartered Accountants

KV Ravi

Secretary

Patna
 7th June'16



Anup Mukerjee

Chairman



CA Archana Sharma
 Partner, ICAI Membership No: 401921
 FRN: 012680C

(1)

DEVELOPMENT MANAGEMENT INSTITUTE SOCIETY
 Second Floor, Udyog Bhawan Campus, East Gandhi Maidan, Patna-800004

INCOME AND EXPENDITURE ACCOUNT FOR THE PERIOD 01.04.2015 - 31.03.2016

Rupees

Particulars	Schedule	Current Year (2015-16)					Previous year (2014-15)
		Unrestricted Funds			Restricted Funds	Total	Total
		Corpus	Designated Funds	General Funds			
INCOME							
Academic Receipts	11	-	-	43,96,500.00	-	43,96,500.00	13,42,000.00
Grants & Donations	12	-	-	500,68,528.92	190,52,532.00	691,21,060.92	385,81,094.41
Income From Investments	13	-	66,75,189.85	31,86,259.55	-	98,61,449.40	-
Other Incomes	14	-	-	5,07,720.00	-	5,07,720.00	11,19,351.00
TOTAL (A)		-	66,75,189.85	581,59,008.46	190,52,532.00	838,86,730.32	410,42,445.41
EXPENDITURE							
Staff Payments & Benefits	15	-	-	-	190,52,532.00	190,52,532.00	85,43,742.00
Academic Expenses	16	-	-	158,98,128.00	-	158,98,128.00	161,67,039.00
Administrative and General Expenses	17	-	11,74,750.00	242,62,686.00	-	254,37,436.00	130,44,204.00
Transportation Expenses	18	-	-	14,10,140.00	-	14,10,140.00	9,92,394.00
Repair & Maintenance	19	-	-	27,56,595.00	-	27,56,595.00	-
Finance Costs	20	-	-	-	-	-	5,284.00
Other Expenses	21	-	-	35,60,785.80	-	35,60,785.80	10,64,658.00
Depreciation				102,70,673.66		102,70,673.66	12,25,124.41
TOTAL (B)		-	11,74,750.00	581,59,008.46	190,52,532.00	783,86,290.46	410,42,445.41
Balance being excess of Income over Expenditure (A-B) Transfer to / from Designated fund							
Building fund							
Others (specify)		-	55,00,439.85	-	-	55,00,439.85	-
Balance Being Surplus (Deficit) Carried to General Fund							
		-			-	55,00,439.85	-
Notes on Accounts	22						

For Development Management Institute Society

In terms of our attached report of even date

For M/s Chanakya Ashok & Co.
Chartered Accountants


Secretary


Chairman




CA Archana Sharma
Partner, ICAI Membership No: 401921
FRN: 012680C



Patna
7th June'16

Schedules Forming Part of Balance Sheet as at 31/03/2016

Schedule -1:			
CORPUS			
Particulars	Current Year	Previous Year	
Balance as at Beginning of Year	156,99,798.00	25,46,292.00	
Add: Contribution towards Corpus	445,60,190.00	131,53,506.00	
	602,59,988.00	156,99,798.00	
Deduct: Assets Written Off during the year created out of Corpus	-	-	
Balance at the Year End	602,59,988.00	156,99,798.00	

Schedule -2:						
GENERAL FUND						
Particulars	Current Year (2015-16)			Previous Year (2014-15)		
	RDD Fund	Other Fund	Total Fund	RDD Fund	Other Fund	Total Fund
Balance as at beginning of the year	87,20,499.00	60,51,036.59	147,71,535.59	-5,922.00	44,53,708.00	44,47,786.00
Add : Transferred from Asset Creation Fund (See Note)		25,46,292.00	25,46,292.00			
Add : Contribution towards General Fund	1690,00,000.00	13,25,000.00	1703,25,000.00	1300,00,000.00	3,61,102.00	1303,61,102.00
Add/(Deduct): Balance of Net Income/(Expenditure) transferred from the Income & Expenditure Account	-478,88,334.80	-21,80,194.12	-500,68,528.92	-312,73,579.00	12,36,226.59	-300,37,352.41
Less : Amount transfer to DMI Corpus Investment Fund	1298,32,164.20	77,42,134.47	1375,74,298.82	987,20,499.00	60,51,036.59	1047,71,535.59
Less : Amount transfer to DMI Scholar Support Fund	850,00,000.00		850,00,000.00	500,00,000.00		500,00,000.00
	400,00,000.00	13,25,000.00	413,25,000.00	400,00,000.00		400,00,000.00
Balance at the year end	48,32,164.20	64,17,134.48	112,49,298.68	87,20,499.00	60,51,036.59	147,71,535.59

Note:

- (i) Fixed Assets amounting Rs. 25,46,292/- purchased during F.Y. 2013-14 was adjusted against General Fund.
(ii) It has been reclassified by reducing the Asset Creation Fund with the corresponding amount and increasing the General Fund during the F.Y. 2015-16.



(3)

KV Raju

Schedule -3: DESIGNATED / EARMARKED FUNDS				
Particulars	Fund Wise Break up		TOTAL	
	DMI Corpus Investment Fund	DMI Scholar Support Fund	Current Year	Previous Year
a. Opening Balance of the Funds	500,00,000.00	400,00,000.00	900,00,000.00	-
b. Additions to the Funds:				
i Donations / Grants	850,00,000.00	413,25,000.00	1263,25,000.00	900,00,000.00
ii Income From Investments made of the Funds	32,81,081.57	26,16,805.97	58,97,887.54	-
iii Accrued Interest on Investments of the Funds	4,32,424.71	3,44,877.61	7,77,302.31	-
iv Other additions (Specify)	-	-	-	-
Total (a+b)	1387,13,506.28	842,86,683.58	2230,00,189.85	900,00,000.00
c. Utilisation / Expenditure towards objectives of Funds.				
i Capital Expenditure				
- Fixed Assets	-	-	-	-
- Others	-	-	-	-
Total i.	-	-	-	-
ii Revenue Expenditure				
- Salaries, Wages etc	-	-	-	-
- Rent	-	-	-	-
- Other Administrative Expenses	-	11,74,750.00	11,74,750.00	-
Total ii.	-	11,74,750.00	11,74,750.00	-
Total (c)	-	11,74,750.00	11,74,750.00	-
Net Balance as at Year End (a+b-c)	1387,13,506.28	831,11,933.58	2218,25,439.85	900,00,000.00

Schedule -4: RESTRICTED FUNDS				
Particulars	Fund Wise Break up		TOTAL	
	Salary Fund	Asset Creation Fund	Current Year	Previous Year
a. Opening Balance of the Funds	164,56,258.00	318,46,494.00	483,02,752.00	-
b. Additions to the Funds:				
i Donations / Grants	325,00,000.00	585,00,000.00	910,00,000.00	700,00,000.00
ii Income From Investments made of the Funds	-	-	-	-
iii Accrued Interest on Investments of the Funds	-	-	-	-
iv Other additions (Specify)	-	-	-	-
Total (a+b)	489,56,258.00	903,46,494.00	1393,02,752.00	700,00,000.00
c. Utilisation / Expenditure towards objectives of Funds.				
i Capital Expenditure				
- Fixed Assets	-	445,60,190.00	445,60,190.00	131,53,506.00
- Others	-	25,46,292.00	25,46,292.00	-
Total i.	-	471,06,482.00	471,06,482.00	131,53,506.00
ii Revenue Expenditure				
- Salaries, Wages etc	190,52,532.00	-	190,52,532.00	85,43,742.00
- Rent	-	-	-	-
- Other Administrative Expenses	-	-	-	-
Total ii.	190,52,532.00	-	190,52,532.00	85,43,742.00
Total (c)	190,52,532.00	471,06,482.00	661,59,014.00	216,97,248.00
Net Balance as at Year End (a+b-c)	299,03,726.00	432,40,012.00	731,43,738.00	483,02,752.00



KV Raju

(4)



Schedule -5: LOANS / BORROWINGS			
A. SECURED LOANS			
Particulars		Current Year	Previous Year
1	Central Government	-	-
2	State Government (Specify)	-	-
3	Financial Institutions		
a)	Term Loans	-	-
b)	Interest Accured and due	-	-
4	Banks:		
a)	Term Loans	-	-
b)	Interest Accured and due	-	-
5	Other Institutions and Agencies	-	-
6	Debentures and Bonds	-	-
7	Others (Specify)	-	-
		-	-

B. UNSECURED LOANS:			
Particulars		Current Year	Previous Year
1	Central Government	-	-
2	State Government (Specify)	-	-
3	Financial Institutions		
a)	Term Loans	-	-
b)	Interest Accrued and due	-	-
4	Banks:		
a)	Term Loans	-	-
b)	Interest Accured and due	-	-
5	Other Institutions and Agencies	-	-
6	Debentures and Bonds	-	-
7	Fixed Deposits	-	-
8	Others (Specify)	-	-
		-	-



(5)

Schedule -6: CURRENT LIABILITIES & PROVISIONS			
1 Separate Classification of Current Liabilities having more than 10% or more of the Total Current Liabilities:			
2 Caution Money			
From Current Students			
From Ex-Students			
3 General Current Liabilities			
Particulars	Current Year	Previous Year	
A Current Liabilities			
1 Deposits from Staff		-	
2 Deposits from Students	3,00,000.00	30,000.00	
3 Sundry Creditors			
a For Goods & Services	-	-	
b Others	-	-	
Performance Security Krishna Consultancy Services	46,272.00	46,272.00	
Performance Security Use Fabricators Pvt. Ltd.	26,53,203.00	3,19,131.00	
Performance Security One & Only Fur. P Ltd.	93,978.00	-	
Retention Money - Bharat Commercial Agency	-	6,16,290.00	
4 Advances Received	-	-	
5 Interest Accrued but not due on:			
a Secured Loans / Borrowings	-	-	
b Unsecured Loans / Borrowings	-	-	
6 Statutory Liabilities: (GPF, TDS, WC Tax, CPF, GIS, NPS):			
a Overdue	-	-	
b Others	2,49,198.00	3,26,994.00	
7 Other Current Liabilities			
a Salaries	-	-	
b Receipts against Sponsored Projects	-	-	
c Receipts against Sponsored Fellowships & Scholarships	-	-	
d Unutilised Grants	-	-	
e Grants in Advance	-	-	
f Other Funds	-	-	
g Other Liabilities	-	-	
TOTAL A	33,42,651.00	13,38,687.00	
B Provisions			
1 For Taxation	-	-	
2 Gratuity	-	-	
3 Superannuation / Pension	-	-	
4 Accumulated Leave Encashment	-	-	
5 Expenses Payable	1,04,500.00	3,75,705.00	
6 Trade Warranties / Claims	-	-	
7 Other (Specify)			
a. Vehicle Hire Charges	-	1,03,541.00	
a. EPF Consultancy Fee	4,000.00	4,000.00	
TOTAL B	1,08,500.00	4,83,246.00	
TOTAL (A+B)	34,51,151.00	18,21,933.00	

Note : Income from scrap sale has been adjusted from Performance Security



Kurain

(6)



- 4 Receipts Against Sponsored Projects, Sponsored Fellowships & Scholarships and other Funds should be shown by way of sub schedule to the above schedule in the following manner:

Head of Account	Opening on 01/04/2015	Transaction		Closing on 31/03/2016
		Debit	Credit	
1 University Grant Comm	-	-	-	-
2. Ministry----	-	-	-	-
3. Others	-	-	-	-
Total	-	-	-	-

- 5 Grants, Unutilized or Otherwise, should also be shown as sub schedule to the above schedule in following manner:

Particulars	Current Year	Previous Year
Balance Brought Forward	1616,18,029.59	44,47,786.00
Add: Receipts during the Year	2613,25,000.00	2000,00,000.00
TOTAL	4229,43,029.59	2044,47,786.00
Less: Utilised for Capital Expenditure	445,60,190.00	131,53,506.00
Balance	3783,82,839.59	1912,94,280.00
Less: Utilised for Revenue Expenditure	691,21,060.92	296,76,250.41
	3092,61,778.67	1616,18,029.59



SCHEDULE 8- INVESTMENTS

INVESTMENTS FROM EARMARKED / ENDOWMENTS FUNDS		
Particulars	Current Year	Previous Year
1. In Central Government Securities	-	-
2. In State Government Securities	-	-
3. Other Approved Securities	-	-
4. Shares	-	-
5. Debentures & Bonds	-	-
6. Others (to be Specified) Long Term	-	-
DMI Corpus Investment	1350,00,000.00	500,00,000.00
DMI Scholar Support	800,00,000.00	400,00,000.00
	2150,00,000.00	900,00,000.00
INVESTMENTS OTHERS		
Particulars	Current Year	Previous Year
1. In Central Government Securities	-	-
2. In State Government Securities	-	-
3. Other Approved Securities	-	-
4. Shares	-	-
5. Debentures & Bonds	-	-
6. Others (to be Specified)	-	-
Short Term	-	-
Fixed Deposit (A/C No. 8531401006763/1)	90,00,000.00	-
Fixed Deposit (A/C No. 8531401006764/1)	60,00,000.00	-
Fixed Deposit (A/C No. 8531301000181)	-	200,00,000.00
Fixed Deposit (A/C No. 8531301000182)	-	200,00,000.00
Fixed Deposit (A/C No. 8531401006208/1)	40,00,000.00	-
Fixed Deposit (A/C No. 8531401006206/1)	80,00,000.00	-
Fixed Deposit (A/C No. 8531401006207/1)	80,00,000.00	-
Fixed Deposit (A/C No. 057913000877)	99,00,000.00	-
Fixed Deposit (A/C No. 057913000878)	99,00,000.00	-
Fixed Deposit (A/C No. 057913000658)	99,00,000.00	-
	647,00,000.00	400,00,000.00

Note : There were five FDs each denomination of Rs. 99,99,000, total value amounting to Rs. 4,99,95,000 which represented DMI Scholar Support Fund & DMI Corpus Investment Fund. They matured on 30.03.2016 & renewal application was filed on 31.03.2016. However the FDs were renewed with effect from 02.04.2016. These FDs have been shown as Investments which were lying in the corresponding Savings Bank Account.



SCHEDULE 9- CURRENT ASSETS

Particulars	Current Year	Previous Year
1. Stock:		
a) Stores and Spares	-	-
b) Loose Tools	-	-
c) Publications	-	-
c) Library Books	-	-
2. Sundry Debtors:		
a) Debts Outstanding more than- Six months	-	-
b) Others	-	-
3. Cash Balances in Hand (Including Cheques / Drafts and Imprest).	15,217.00	43,385.00
4. Bank Balance (to be further classified as pertaining to earmarked fund or otherwise)	-	-
a) With Scheduled Banks:		
- In Current Accounts	-	-
- In Term Deposit Accounts	-	-
- In Savings Accounts	-	-
Canara Bank-8531101013041	252,91,416.20	227,23,136.00
ICICI Bank-057901001997	3,25,845.00	-
IDBI Bank - 1125104000076164	65,95,061.00	5,00,000.00
Yes Bank - 025394600000247	32,85,391.40	5,00,000.00
a) With Non-Scheduled Banks:		
- In Current Accounts	-	-
- In Term Deposit Accounts	-	-
- In Savings Accounts	-	-
5. Post Office- Savings Accounts	-	-
TOTAL	355,12,930.60	237,66,521.00



K.V. Raju



Schedule 10: LOANS, ADVANCES & DEPOSITS

Particulars	Current Year	Previous Year
1. Advances to Employees: (Non-interest bearing)		
a) Salary	-	-
b) Festival	-	-
c) LTC	-	-
d) Medical Advance	-	-
e) Others (to be Specified)	-	-
2. Long Term Advance to Employees:(Interest Bearing)	-	-
a) Vehicle Loan	-	-
b) Home Loan	-	-
b) Others (to be Specified)	-	-
3. Advance and Other Amounts recoverable in cash or in Kind or for Value to be Received:	-	-
a) On Capital Account	-	-
b) to Suppliers	-	-
LIBSYS Ltd.	21,66,000.00	1,54,718.00
b) Others (to be Specified)	-	-
Neelkamal Verma Neerad	1,50,400.00	-
RICC Rajgir	-	12,000.00
Pramod Singh	-	1,730.00
4. Prepaid Expenses:	-	-
a) Insurance.	-	-
b) Other Expenses.	-	-
5. Deposits	-	-
a) Telephone	-	-
b) Lease Rent	18,05,264.00	17,66,376.00
c) Electricity	4,20,000.00	4,20,000.00
d) AICTE, if Applicable	-	-
e) MCI, if Applicable	-	-
f) Others (to be Specified)	-	-
6. Income Accrued:	-	-
a) On Investments from Earmarked / Endowment Funds	-	-
b) On Investments - Others	-	-
c) On Loans & Advances	-	-
d) Others (Includes Income due unrealized)	-	-
7. Other Receivable:	-	-
a) Debit Balances in Sponsored Projects	-	-
b) Debit Balance in Fellowships & Scholarship	-	-
c) Grants Recoverable	-	-
d) Other Receivables	14,10,831.00	-
8. Claims Receivables:	-	-
TOTAL	59,52,495.00	23,54,824.00



KV Raju

(11)



Schedule: 11 ACADEMIC RECEIPTS

Particulars	Current Year	Previous Year
FEE FROM STUDENTS		
Academic		
1. Tuition Fee	42,18,000.00	13,25,000.00
2. Admission Fee	-	17,000.00
3. Enrolment Fee	-	-
4. Library Admission Fee	-	-
5. Laboratory Fee	-	-
6. Art & Craft Fee	-	-
7. Registration Fee	-	-
8. Syllabus Fee	-	-
Total (A)	42,18,000.00	13,42,000.00
Examinations		
1. Admission Test Fee	-	-
2. Annual Examinations Fee	-	-
3. Marks Sheet, Certificate Fee.	-	-
Total (B)	-	-
Other Fees		
1. Identity Card Fee	-	-
2. Fine / Miscellaneous Fee	-	-
3. Medical Fee	-	-
4. Transportation Fee	-	-
5. Hostel Fee	1,78,500.00	-
Total (C)	1,78,500.00	-
Other Fees		
1. Sale of Syllabus and Question Paper, etc.	-	-
2. Sale of Prospectus including Admission forms	-	-
Total (D)	-	-
TOTAL (A+B+C+D)	43,96,500.00	13,42,000.00

Schedule: 12 GRANTS & DONATIONS (Irrevocable Grants & Subsidies Received)

Particulars	Current Year	Previous Year
1. Central Government	-	-
2. State Governments	-	-
3. Government Agencies	-	-
4. Institutions / Welfare Bodies (BRLPS-NRLM)	-	3,61,102.00
5. International Organisations	-	-
6. Others (Specify)	-	-
TOTAL	-	3,61,102.00



(12)



Schedule: 13 INCOME FROM INVESTMENTS.

Particulars	Current Year	Previous Year
Investment from Earmarked / Endowment Fund	-	-
1) Interest	-	-
a) On Govt Securities.	-	-
b) Other Bonds / Debenture.	-	-
2) Income Received	-	-
Interest on general fund	28,15,231.00	-
Interest on corpus investment fund	32,81,082.00	-
Interest on scholar support fund	26,16,806.00	-
3) Income Accrued	-	-
TDS Receivable on Interest on General Fund	3,71,028.69	-
TDS Receivable on Interest on Corpus Investment Fund	4,32,424.71	-
TDS Receivable on Interest on Scholar Support Fund	3,44,877.61	-
4) Others (Specify)	-	-
TOTAL	98,61,450.00	-
Transferred to Earmarked / Endowment Fund	98,61,450.00	-

Schedule: 14 OTHER INCOME.

Particulars	Current Year	Previous Year
A. Income from Land & Building		
1) Hostel Room Rent	-	-
2) Licence Fee	-	-
3) Hire Charges of Auditorium / Play Ground / Convention Centre etc.	-	-
4) Electricity & Water Charges	-	-
Total A	-	-
B. Sale of Institute's Publications	-	-
Total B	-	-
C. Income from Holding events		
1. Gross Receipts from Annual Function / Sports Carnival	-	-
Less: Direct Expenditure incurred on the Annual Function / Sports Carnival	-	-
2. Gross Receipts from Fetes.	-	-
Less: Direct Expenditure on Fetes	-	-
3. Gross Receipts from Educational Tours.	-	-
Less: Direct Expenditure Incurred on Tours.	-	-
4. Gross Receipts from Others (Specify).	-	-
CARE Centre - Collective & Commons	95,000.00	-
Total C	95,000.00	-
D. Interest on Term Deposits:		
a) With Scheduled Banks	-	-
b) With Non Scheduled Banks	-	-
c) With Institutions	-	-
d) Others	-	-
Total D	-	-



K. V. K. Singh

(13)



E. Interest on Savings Accounts:		
a) With Scheduled Banks		11,19,351.00
b) With Non Scheduled Banks	-	-
c) With Institutions	-	-
d) Others	-	-
Total E	-	11,19,351.00
F. Interest on Loans:		
a) Employee / Staffs	-	-
b) Others	-	-
Total F	-	-
G. Interest on Debtors and Other Receivables	-	
Total G	-	
H. Others:		
a) Income From Consultancy	-	-
b) RTI Fee	-	-
c) Income from Royalty	-	-
d) Sale of Application Forms (Recruitments)	-	-
e) Miscellaneous , Sale of Tender Form, waste paper, etc	820.00	-
f) Profit on Sale / Disposal of Assets.	4,11,900.00	-
Total H	4,12,720.00	-
TOTAL (A + B + C + D+ E + F + G + H)	5,07,720.00	22,38,702.00

Note

TDS Receivable stands in the books of Accounts at Rs. 11,48,331 being deducted from Bank Interest. It has been divided among the different funds in proportion to the amount of interest received.



Kurjan



Schedule: 15 STAFF PAYMENTS AND BENEFITS

Particulars	Current Year	Previous Year
1. Salary & Wages		
a) Basic 48,61,178.00		
b) Consolidated Pay 11,40,000.00		
c) Conveyance allowance 3,35,523.00		
d) DA 68,38,389.00		
e) Deduction against absentee -		
f) EPF (Employer Contribution) 14,15,579.00		
g) Grade Pay 9,33,292.00		
h) HRA 2,22,005.00		
i) SAS (8.33% - Employer Cost) 9,83,459.00		-
j) Deduction Resident Maint/Elec Chgs -5,788.00		-
k) EL Encashment 72,636.00		
l) ML Encashment 1,24,970.00	169,21,243.00	79,48,978.00
2. Allowance & Bonus		-
3. Contribution to Provident Fund		-
4. Contribution to ESI		-
5. Contribution to Other Fund for Employee Welfare		-
Leave Salary Contribution 28,258.00		-
Pension Contribution 50,499.00	78,757.00	-
6. Staff Welfare Expenses	-	-
7. Retirement & Terminal Benefits		-
8. LTC Facility		-
9. Medical Facilities	4,80,256.00	2,16,374.00
10. Children Education Allowance		-
11. Honorarium	-	-
12. TA / DA Expenses		-
13. Others (Specify)		-
(a) EPF Admin Charges 1,53,765.00		14,301.00
(b) Facility for faculty residence 1,57,536.00		2,81,912.00
(c) Outsource Staffs 12,02,160.00		40,177.00
(d) Capacity Building & Training		42,000.00
(e) Self Learning/ Development Expense 42,500.00		
(f) CUG to Faculty/Staffs 16,315.00		-
TOTAL	190,52,532.00	85,43,742.00



KU Raju



Schedule: 16 ACADEMIC EXPENSES

Particulars	Current Year	Previous Year
1. Laboratory Expenses		-
2. Field Work / Participation		-
Travel & Hospitality - Academic	14,53,304.00	24,53,244.00
3. Seminar / Workshop	45,30,750.00	35,34,264.00
4. Payment to Visiting Faculty	10,30,470.00	3,06,744.00
5. Examination		-
6. Staff Welfare Expenses		-
7. Admission Expenses		-
PDM Admission	10,88,266.00	-
PDM Advertisement & Promotion	34,24,046.00	58,43,925.00
8. Convocation Expenses		-
9. Publications		-
10. Stipend / means-cum-merit scholarship	97,500.00	9,48,000.00
11. Subscription Expenses		-
Periodicals, Journals & Subscription	35,25,595.00	83,769.00
Database/ E-Journals	2,09,037.00	29,05,093.00
12. Others (Specify)		
Library Expenditure		
Learning Resources (Laptop to Students)	5,39,160.00	92,000.00
TOTAL	158,98,128.00	161,67,039.00

Schedule: 17 ADMINISTRATIVE AND GENERAL EXPENSES

Particulars	Current Year	Previous Year
1. Electricity and Power	10,90,499.00	2,22,351.00
2. Water Charges	-	-
3. Insurance	52,590.00	-
4. Rent, Rates and Taxes		-
Rent	118,23,776.00	32,04,465.00
Contribution for Facility, Support & Services	50,00,000.00	50,00,000.00
5. Postage and Telegram	68,253.00	-
6. Telephone and Internet Charges	2,63,682.00	1,18,531.00
7. Printing & Stationery	6,68,747.00	3,73,935.00
8. Travelling and Conveyance Expenses	10,69,141.00	6,27,309.00
9. Expenses on seminar / workshops		-
10. Hospitality		-
11. Auditors Remuneration		
Internal Audit	1,37,400.00	
Statutory Audit	57,250.00	
	1,94,650.00	1,57,320.00
12. Professional Charge	2,58,749.00	13,200.00
13. Advertisement & Publicity	17,74,750.00	18,57,188.00
14. Magazines & Journals		-
15. Others (Specify)		-
Office Expense	3,96,709.00	2,90,028.00
Recruitment	6,28,283.00	9,58,401.00
Medical Expenses	53,160.00	-
Canteen Expense	8,10,852.00	2,21,476.00
Board/Society Meeting Expenses	1,08,845.00	
TOTAL	242,62,686.00	130,44,204.00



KV Raju

(16)



Schedule: 18 TRANSPORTATION EXPENSES

Particulars	Current Year	Previous Year
1. Vehicles (Owned by Educational Institution)	-	-
a. Running Expenses	-	-
b. Repair and Maintenance	-	-
c. Insurance Expenses	-	-
1. Vehicles taken on Rent / lease	-	-
a. Rent / lease Expenses	14,10,140.00	9,92,394.00
TOTAL	14,10,140.00	-

Schedule: 19 REPAIR AND MAINTENANCE

Particulars	Current Year	Previous Year
1. Building	8,08,410.00	-
2. Furniture and Fixtures	4,23,990.00	-
3. Plant and Machinery	-	-
4. Office Equipments	-	-
5. Cleaning Material & Services	-	-
6. Others (Specify)	-	-
Spares & AMC	7,65,938.00	-
Website Maintenance Expenses	7,58,257.00	-
TOTAL	15,24,195.00	-

Schedule: 20 FINANCE COSTS

Particulars	Current Year	Previous Year
1. Interests on Fixed Loans	-	-
2. Interests on Other Loans	-	-
3. Bank Charges	-	5,284.00
4. Others (Specify)	-	-
TOTAL	-	5,284.00

Schedule: 21 OTHER EXPENSES

Particulars	Current Year	Previous Year
1. Provisions for Bad and Doubtful Debts / Advances	-	-
2. Irrecoverable Balance Written Off	-	-
3. Others (Specify)	-	-
Bank Charges	4,636.80	-
Hostel Expenses	9,73,397.00	-
Establishment Exp(Renewal/ Renovation/logo)	-	10,64,658.00
CARE Centres (Collective & Commons)	21,56,783.00	-
CEP's (Producer's Enterprises)	4,25,969.00	-
TOTAL	35,60,785.80	10,64,658.00



KV Raju



DEPRECIATION SCHEDULE

ASSET CATEGORY - FURNITURE & FIXTURES

Name of Item	Date of Purchase	Reporting Date (Opening)	Reporting Date (Closing)	Difference	Gross Value	Depreciation Rate	Depreciation Amount	Net Value (as on 31.03.2016)
Mattress	23-07-2014	01-04-2015	31-03-2016	365	28,648.33	25%	7,162.08	21,486.25
Cot	31-07-2014	01-04-2015	31-03-2016	365	67,128.39	25%	16,782.10	50,346.29
Table	03-09-2014	01-04-2015	31-03-2016	365	77,120.72	25%	19,280.18	57,840.54
Furniture & Fixtures	07-10-2014	01-04-2015	31-03-2016	365	4,16,399.85	25%	1,04,099.96	3,12,299.89
Bed	03-11-2014	01-04-2015	31-03-2016	365	23,459.64	25%	5,864.91	17,594.73
Mattress	13-11-2014	01-04-2015	31-03-2016	365	10,865.75	25%	2,716.44	8,149.32
Wooden Rack, Almirah	22-11-2014	01-04-2015	31-03-2016	365	25,175.96	25%	6,293.99	18,881.97
Bed, Table	03-01-2015	01-04-2015	31-03-2016	365	2,80,930.85	25%	70,232.71	2,10,698.13
Mattress	02-02-2015	01-04-2015	31-03-2016	365	1,47,120.89	25%	36,780.22	1,10,340.66
Book Case, Storvel	21-03-2015	01-04-2015	31-03-2016	365	4,33,232.19	25%	1,08,308.05	3,24,924.14
sofa, Lounge Chair, Jennifer Chair	31-03-2015	01-04-2015	31-03-2016	365	2,12,835.00	25%	53,208.75	1,59,626.25
Furniture & Fixtures	31-03-2015	01-04-2015	31-03-2016	365	41,08,599.00	25%	10,27,149.75	30,81,449.25
Coffier	07-10-2014	01-04-2015	31-03-2016	365	5,984.05	25%	1,496.01	4,488.04
Furniture & Furnitures	27-03-2015	01-04-2015	31-03-2016	365	34,39,035.10	25%	8,59,758.78	25,79,276.33
TOTAL - (A)					92,76,535.72		23,19,133.929	69,57,401.796



Kufain



(18)

Name of Item	Date of Purchase	Reporting Date (Opening)	Reporting Date (Closing)	Difference	Gross Value	Depreciation Rate	Depreciation Amount	Net Value (as on 31.03.2016)
Almirah	26-05-2015	01-04-2015	31-03-2016	310	6,04,501.00	25%	1,28,352.95	4,76,148.05
Almirah	28-07-2015	01-04-2015	31-03-2016	247	1,38,375.00	25%	23,410.02	1,14,964.98
Bed/Mattress	14-05-2015	01-04-2015	31-03-2016	322	1,67,980.00	25%	37,047.64	1,30,932.36
Bed/Mattress	26-05-2015	01-04-2015	31-03-2016	310	5,00,717.00	25%	1,06,316.62	3,94,400.38
Bed/Mattress	02-07-2015	01-04-2015	31-03-2016	273	89,586.00	25%	16,751.35	72,834.65
Bed/Mattress	02-07-2015	01-04-2015	31-03-2016	273	1,01,163.00	25%	18,916.10	82,246.90
Bed/Mattress	02-07-2015	01-04-2015	31-03-2016	273	1,82,735.00	25%	34,168.94	1,48,566.06
Bed/Mattress	19-09-2015	01-04-2015	31-03-2016	194	55,180.00	25%	7,332.14	47,847.86
Bed/Mattress	02-11-2015	01-04-2015	31-03-2016	150	39,180.00	25%	4,025.34	35,154.66
Bed/Mattress	23-02-2016	01-04-2015	31-03-2016	37	29,862.00	25%	756.78	29,105.22
Bed/Mattress	14-03-2016	01-04-2015	31-03-2016	17	10,080.00	25%	117.37	9,962.63
Kitchen Crockery	12-06-2015	01-04-2015	31-03-2016	293	1,93,404.00	25%	38,813.27	1,54,590.73
Sofa	30-05-2015	01-04-2015	31-03-2016	306	1,95,220.00	25%	40,915.97	1,54,304.03
Sofa	20-06-2015	01-04-2015	31-03-2016	285	1,70,818.00	25%	33,344.61	1,37,473.39
Sofa	02-11-2015	01-04-2015	31-03-2016	150	29,862.00	25%	3,068.01	26,793.99
Table & Chair	14-05-2015	01-04-2015	31-03-2016	322	29,980.00	25%	6,120.03	23,859.97
Table & Chair	14-05-2015	01-04-2015	31-03-2016	322	14,880.00	25%	3,281.75	11,598.25
Table & Chair	26-05-2015	01-04-2015	31-03-2016	310	6,43,170.00	25%	1,36,563.49	5,06,606.51
Table & Chair	30-05-2015	01-04-2015	31-03-2016	306	91,540.00	25%	19,185.78	72,354.22
Table & Chair	16-06-2015	01-04-2015	31-03-2016	289	8,500.00	25%	1,682.53	6,817.47
Table & Chair	02-07-2015	01-04-2015	31-03-2016	273	2,22,730.00	25%	41,647.46	1,81,082.54
Table & Chair	02-07-2015	01-04-2015	31-03-2016	273	1,12,365.00	25%	21,010.72	91,354.28
Table & Chair	28-07-2015	01-04-2015	31-03-2016	247	64,530.00	25%	10,917.06	53,612.94
Table & Chair	26-08-2015	01-04-2015	31-03-2016	218	18,39,267.00	25%	2,74,630.28	15,64,636.72
Table & Chair	13-10-2015	01-04-2015	31-03-2016	170	4,16,387.00	25%	48,483.42	3,67,903.58
Table & Chair	17-10-2015	01-04-2015	31-03-2016	166	19,89,069.00	25%	2,26,154.42	17,62,914.58
Table & Chair	02-11-2015	01-04-2015	31-03-2016	150	73,076.00	25%	7,507.81	65,568.19
Table & Chair	28-11-2015	01-04-2015	31-03-2016	124	74,605.00	25%	6,336.32	68,268.68
Table & Chair	23-02-2016	01-04-2015	31-03-2016	37	75,442.00	25%	1,911.89	73,530.11
Visitor Chair	05-01-2016	01-04-2015	31-03-2016	86	3,48,735.00	25%	20,541.92	3,28,193.08
Budha Statue	05-02-2016	01-04-2015	31-03-2016	55	11,619.00	25%	437.70	11,181.30
Miss Purchase Prog Adv	12-03-2016	01-04-2015	31-03-2016	19	7,051.00	25%	91.76	6,959.24
Furniture - Use Fabricators	12-05-2015	01-04-2015	31-03-2016	324	74,33,844.00	25%	16,49,702.37	57,84,141.63
Furniture - Use Fabricators	18-08-2015	01-04-2015	31-03-2016	226	63,77,190.00	25%	9,87,154.07	53,90,035.93
Furniture - Use Fabricators	26-06-2015	01-04-2015	31-03-2016	279	53,88,427.00	25%	10,29,706.26	43,58,720.74
Furniture - Use Fabricators	19-03-2016	01-04-2015	31-03-2016	12	68,14,774.00	25%	56,011.84	67,58,762.16
TOTAL - (B)					345,45,844.00		50,42,907.99	295,02,936.01
GRAND TOTAL - (A + B)					438,22,379.72		73,62,041.92	364,60,337.80

K. V. Raju



(19)



ASSET CATEGORY - COMPUTER/PERIPHERALS

Name of Item	Date of Purchase	Reporting Date (Opening)	Reporting Date (Closing)	Difference	Gross Value	Depreciation Rate	Depreciation Amount	Net Value (as on 31.03.2016)
Desktop	01-04-2014	01-04-2015	31-03-2016	365	10,12,678.27	40%	4,05,071.31	6,07,606.96
Printer	01-04-2014	01-04-2015	31-03-2016	365	3,78,012.37	40%	1,51,204.95	2,26,807.42
Mini Laptop	27-12-2014	01-04-2015	31-03-2016	365	2,38,060.16	40%	95,224.07	1,42,836.10
Hanging Projector	31-03-2015	01-04-2015	31-03-2016	365	28,500.00	40%	11,400.00	17,100.00
Desktop	31-03-2015	01-04-2015	31-03-2016	365	16,81,890.00	40%	6,72,756.00	10,09,134.00
Software	17-03-2015	01-04-2015	31-03-2016	365	2,60,486.23	40%	1,04,194.49	1,56,291.74
Software	12-04-2014	01-04-2015	31-03-2016	365	36,98,251.10	40%	14,79,300.44	22,18,950.658
TOTAL - (A)								
Printer & Toner	09-05-2015	01-04-2015	31-03-2016	327	21,500.00	40%	7,704.66	13,795.34
Printer, computer accessories	09-05-2015	01-04-2015	31-03-2016	327	49,900.00	40%	17,881.97	32,018.03
Laptop & Projector	16-06-2015	01-04-2015	31-03-2016	289	72,900.00	40%	23,088.33	49,811.67
Laptops	04-07-2015	01-04-2015	31-03-2016	271	3,79,992.00	40%	1,12,852.42	2,67,139.58
Laptops	23-07-2015	01-04-2015	31-03-2016	252	1,18,580.00	40%	32,747.57	85,832.43
Desktop	03-02-2016	01-04-2015	31-03-2016	57	1,06,000.00	40%	6,621.37	99,378.63
Software-office pro plus	27-06-2015	01-04-2015	31-03-2016	278	4,57,873.00	40%	1,39,494.46	3,18,378.54
Software - Anti Virus	13-10-2015	01-04-2015	31-03-2016	170	83,475.00	40%	15,551.51	67,923.49
Software	26-02-2016	01-04-2015	31-03-2016	34	16,000.00	40%	596.16	15,403.84
SPSS Software	23-09-2015	01-04-2015	31-12-2015	99	11,58,440.00	40%	3,26,767.74	10,41,672.26
Printer & Scanner	04-06-2015	01-04-2015	31-03-2016	301	26,000.00	40%	8,576.44	17,423.56
Printer & Scanner	28-11-2015	01-04-2015	31-03-2016	124	42,367.00	40%	5,757.27	36,609.73
Printer & Toner	14-03-2016	01-04-2015	31-03-2016	17	56,800.00	40%	1,058.19	55,741.81
Router & Switch	29-01-2016	01-04-2015	31-03-2016	62	29,450.00	40%	2,000.99	27,449.01
TOTAL - (B)								
GRAND TOTAL - (A + B)					63,37,528.10		19,79,999.51	43,47,528.58



Kulapn

(20)

ASSET CATEGORY -ELECTRIC INSTALLATIONS

Name of Item	Date of Purchase	Reporting Date (Opening)	Reporting Date (Closing)	Difference	Gross Value	Depreciation Rate	Depreciation Amount	Net Value (as on 31.03.2016)
FAN	04-08-2014	01-04-2015	31-03-2016	365	13,026.93	20%	2,605.39	10,421.54
FAN, Kettle	13-09-2014	01-04-2015	31-03-2016	365	11,872.03	20%	2,374.41	9,497.62
FAN	15-09-2014	01-04-2015	31-03-2016	365	2,809.97	20%	561.99	2,247.98
Fan, Geyser	03-11-2014	01-04-2015	31-03-2016	365	25,789.04	20%	5,157.81	20,631.24
Printer	09-12-2014	01-04-2015	31-03-2016	365	35,292.49	20%	7,058.50	28,233.99
Freeze, LED TV, Microwave	19-01-2015	01-04-2015	31-03-2016	365	1,86,068.16	20%	37,213.63	1,48,854.53
FA - Geyser	12-08-2014	01-04-2015	31-03-2016	365	39,304.11	20%	7,860.82	31,443.29
FA - Geyser	10-03-2015	01-04-2015	31-03-2016	365	78,229.35	20%	15,645.87	62,583.48
FA - LG Fridge	22-08-2014	01-04-2015	31-03-2016	365	13,095.67	20%	2,619.13	10,476.54
FA - Water Dispenser	04-08-2014	01-04-2015	31-03-2016	365	9,820.16	20%	1,964.03	7,856.13
FA - Water Dispenser	17-01-2015	01-04-2015	31-03-2016	365	14,208.00	20%	2,841.60	11,366.40
FA - Water Dispenser	27-01-2015	01-04-2015	31-03-2016	365	59,087.34	20%	11,817.47	47,269.87
TOTAL - (A)					4,89,603.26		97,720.65	3,90,882.6104



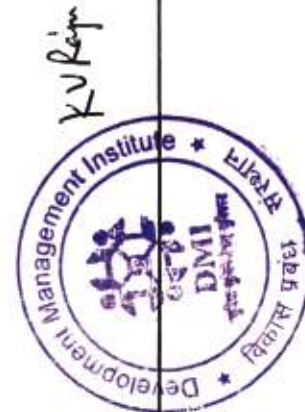
Name of item	Date of Purchase	Reporting Date (Opening)	Reporting Date (Closing)	Difference	Gross Value	Depreciation Rate	Depreciation Amount	Net Value (as on 31.03.2016)
AC & Stabilizer	11-04-2015	01-04-2015	31-03-2016	355	5,10,800.00	20%	99,361.10	4,11,438.90
AC	27-05-2015	01-04-2015	31-03-2016	309	1,40,000.00	20%	23,704.11	1,16,295.89
AC	27-05-2015	01-04-2015	31-03-2016	309	2,64,000.00	20%	44,690.18	2,19,309.82
AC	15-09-2015	01-04-2015	31-03-2016	198	39,000.00	20%	4,231.23	34,768.77
AC	17-03-2016	01-04-2015	31-03-2016	14	65,500.00	20%	502.47	64,997.53
Camera	28-09-2015	01-04-2015	31-03-2016	185	31,200.00	20%	2,118.63	18,781.37
Camera	07-12-2015	01-04-2015	31-03-2016	115	68,950.00	20%	4,344.79	64,605.21
CCTV Camera	15-10-2015	01-04-2015	31-03-2016	168	2,67,088.00	20%	24,586.73	2,42,501.27
Coffee m/c	29-05-2015	01-04-2015	31-03-2016	307	73,775.00	20%	12,410.37	61,364.63
Coffee m/c	29-05-2015	01-04-2015	31-03-2016	307	73,775.00	20%	12,410.37	61,364.63
Cooler	26-05-2015	01-04-2015	31-03-2016	310	1,29,510.00	20%	21,998.96	1,07,511.04
Cooler	26-05-2015	01-04-2015	31-03-2016	310	59,430.00	20%	10,094.96	49,335.04
Cooler	07-07-2015	01-04-2015	31-03-2016	268	94,900.00	20%	13,936.00	80,964.00
Ceysar	19-09-2015	01-04-2015	31-03-2016	194	57,220.00	20%	6,082.56	51,137.44
Ceysar	31-10-2015	01-04-2015	31-03-2016	152	1,53,800.00	20%	12,809.64	1,40,990.36
Kent RO	27-05-2015	01-04-2015	31-03-2016	309	61,200.00	20%	10,362.08	50,837.92
Kent RO	27-06-2015	01-04-2015	31-03-2016	278	3,65,000.00	20%	55,600.00	3,09,400.00
Kent RO	27-08-2015	01-04-2015	31-03-2016	217	41,500.00	20%	4,934.52	36,565.48
Microwave Oven	27-05-2015	01-04-2015	31-03-2016	309	43,200.00	20%	7,314.41	35,885.59
Microwave Oven	15-09-2015	01-04-2015	31-03-2016	198	10,800.00	20%	1,171.73	9,628.27
Refrigerator	27-05-2015	01-04-2015	31-03-2016	309	56,400.00	20%	9,549.37	46,850.63
Television	27-05-2015	01-04-2015	31-03-2016	309	94,000.00	20%	15,915.62	78,084.38
Television	27-05-2015	01-04-2015	31-03-2016	309	94,000.00	20%	15,915.62	78,084.38
Television	20-06-2015	01-04-2015	31-03-2016	285	49,000.00	20%	7,652.05	41,347.95
Television	15-09-2015	01-04-2015	31-03-2016	198	23,500.00	20%	2,549.59	20,950.41
Television	17-03-2016	01-04-2015	31-03-2016	14	23,500.00	20%	180.27	23,319.73
Washing Machine	07-04-2015	01-04-2015	31-03-2016	359	98,000.00	20%	19,277.81	78,722.19
Washing Machine	27-05-2015	01-04-2015	31-03-2016	309	56,000.00	20%	9,481.64	46,518.36
Washing Machine	27-05-2015	01-04-2015	31-03-2016	309	28,000.00	20%	4,740.82	23,259.18
Genaset	19-03-2016	01-04-2015	31-03-2016	12	30,47,141.00	20%	20,036.00	30,27,105.00
TOTAL - (B)					61,09,889.00		4,77,972.63	56,31,916.37
GRAND TOTAL - (A + B)					65,98,492.26		5,75,693.29	60,22,798.98



(22)

ASSET CATEGORY - LIBRARY BOOKS

Name of Item	Date of Purchase	Reporting Date (Opening)	Reporting Date (Closing)	Difference	Gross Value	Depreciation Rate	Depreciation Amount	Net Value (as on 31.03.2016)
Books	01-04-2014	01-04-2015	31-03-2016	365	1,86,287.51	20%	37,257.50	1,49,030.01
Books	01-04-2015	01-04-2015	31-03-2016	365	52,882.41	20%	10,576.48	42,305.93
Books	17-03-2015	01-04-2015	31-03-2016	365	1,14,156.51	20%	22,831.30	91,325.21
Books	24-03-2015	01-04-2015	31-03-2016	365	7,766.10	20%	1,553.22	6,212.88
Books	31-03-2015	01-04-2015	31-03-2016	365	13,587.00	20%	2,717.40	10,869.60
Books	31-03-2015	01-04-2015	31-03-2016	365	25,975.00	20%	5,195.00	20,780.00
Books	31-03-2015	01-04-2015	31-03-2016	365	1,58,702.00	20%	31,740.40	1,26,961.60
Books	31-03-2015	01-04-2015	31-03-2016	365	4,51,927.00	20%	90,385.40	3,61,541.60
TOTAL - (A)					10,11,283.52		2,02,256.704	8,09,026.816
Books	24-04-2015	01-04-2015	31-03-2016	342	52,653.00	20%	9,867.03	42,785.97
Books	09-05-2015	01-04-2015	31-03-2016	327	4,91,734.00	20%	88,107.96	4,03,626.04
Books	09-05-2015	01-04-2015	31-03-2016	327	84,049.00	20%	15,059.74	68,989.26
Books	30-05-2015	01-04-2015	31-03-2016	306	10,941.00	20%	1,834.49	9,106.51
Books	20-06-2015	01-04-2015	31-03-2016	285	32,269.00	20%	5,039.27	27,229.73
Books	20-06-2015	01-04-2015	31-03-2016	285	12,340.00	20%	1,927.07	10,412.93
Books	20-06-2015	01-04-2015	31-03-2016	285	12,451.00	2%	194.44	12,256.56
Books	20-06-2015	01-04-2015	31-03-2016	285	13,425.00	20%	2,096.51	11,328.49
Books	10-08-2015	01-04-2015	31-03-2016	234	19,554.00	20%	2,507.30	17,046.80
Books	10-08-2015	01-04-2015	31-03-2016	234	4,688.00	20%	601.09	4,086.91
Books	19-09-2015	01-04-2015	31-03-2016	194	22,909.00	20%	2,435.26	20,473.74
Books	05-10-2015	01-04-2015	31-03-2016	178	12,960.00	20%	1,264.04	11,695.96
Books	05-10-2015	01-04-2015	31-03-2016	178	45,114.00	20%	4,400.16	40,713.84
Books	05-11-2015	01-04-2015	31-03-2016	147	11,963.00	20%	963.60	10,999.40
Books	28-11-2015	01-04-2015	31-03-2016	124	25,487.00	20%	1,731.72	23,755.28
Books	22-12-2015	01-04-2015	31-03-2016	100	85,612.00	20%	4,691.07	80,920.93
Books	22-01-2016	01-04-2015	31-03-2016	69	1,56,382.00	20%	5,912.52	1,50,469.48
Books	01-03-2016	01-04-2015	31-03-2016	30	1,24,653.00	20%	2,049.09	1,22,603.91
Books	31-03-2016	01-04-2015	31-03-2016	0	45,721.00	20%	-	45,721.00
Books	31-03-2016	01-04-2015	31-03-2016	0	10,275.00	20%	-	10,275.00
TOTAL - (B)				0	12,75,180.00		1,50,682.25	11,24,497.75
GRAND TOTAL - (A + B)					22,86,463.52		3,52,938.95	19,33,524.57



(23)

SCHEDULE 22 : NOTES TO ACCOUNTS

1 Significant Accounting Policies

- a The Institution follows Accrual System as a basis of Recognition of Major types of Expenses and Revenue.
- b Accounting for Income from and Expenditure on specialised Activities such as research are made on Cash Basis.
- c Conversion or translation of Foreign Currency. (In case of Organisations Receiving Foreign Funds)-No Foreign Funds Received.
- d Methods of Depreciation:
The institute is charging depreciation on day basis at the following rates:
 - (i) Furniture & Fixtures - 25 %
 - (ii) Computer Peripherals - 40%
 - (iii) Electric Installations - 20%
 - (iv) Library Books - 20%
- e Valuation of Inventory: There is no Inventories with the Institutions.
- f Valuation of Investments: Made at cost.
- g Treatment of Employee Benefit: The employees are given various welfare benefits in the form of Employee Provident Fund @ 12% , Super Annuation Scheme @ 8.33% & Accidental Mediclaim.
- h Valuation of Fixed Assets: Made at Purchase / Historical Cost
- i Contingent Liabilities: Nil

2 General Fund

- a The balance brought forward from previous year 2014-15 is Rs. 1,47,71,535.59.
- b The institute has received a grant of Rs. 1,325,000.00 from Bihar State Milk Cooperative Federation Ltd. & Rs. 26,00,00,000 from Rural Development Dept. Govt. of Bihar for the Financial Year 2015-16.
- c Rs. 13,25,00,000 has been designated towards Scholar Support Fund out of the above grant received.
- d Rs. 16,90,00,000 has been contributed towards General Fund out of the above grant received
- e Rs. 3,25,00,000 is restricted towards Salary Fund out of the above grant received.
- f Rs. 5,85,00,000 is restricted towards Asset Creation Fund out of the above grant received
- g The deficit of Rs. 5,04,80,428.92 transferred from Income & Expenditure Account has been adjusted from General Fund.
- h Rs.8,50,00,000 has been designated towards DMI Corpus Investment Fund.
- i Rs.4,00,00,000 has been designated towards DMI Scholar Support Fund.
- j The balance left in General Fund for the Financial year 2015-16 is - Rs. 1,08,37,398.68.
- k Fixed Assets amounting Rs. 25,46,292/- purchased during F.Y. 2013-14 was adjusted against General Fund. It has been reclassified by reducing the Asset Creation Fund with the corresponding amount and increasing the General Fund during the F.Y. 2015-16.
- l The total amount appearing in Grants & Donation in Income & Expenditure Account for the F.Y. 2014-15 were shown by adding surplus salary fund by Rs.1,64,56,258. During current year, previous year figure of Grants & Donation in Income & Expenditure Account, has been reduced by the corresponding amount to bring down the sum total of Grants & Donations to the extent of grant amount utilised.

3 Additions to CORPUS Fund:

- a The balance brought forward from previous year 2014-15 is Rs. 15,699,798.00
- b Contribution towards corpus in purchase of fixed assets is Rs. 4,45,60,190 for the current period.
- c The closing balance of corpus for the Financial Year 2015-16 is Rs.6,02,59,988.

(24)



K. V. Raju



4 Capacity & Capability

S.N.	Parameters	Total	Per / Student
a	No of Students	15	0.6
b	No of Teachers	9	
c	Collection on Account of Building Fund and Expenditure there of		
d		NIL	NIL
e	Collection for Sports activities and expenditure thereof	NIL	NIL
f			
g	Collection for Co-curricular activities and expenditure thereof	NIL	NIL
h			
i	Collection on account of Development Charges and expenditure thereof	NIL	NIL
j	Collection for Medical Expenses and Expenditure thereof	53,160	3544
k	Compliance with statutory dues like EPF and ESI	NIL	NIL
l	Salary Structure of Teachers	Yes	NIL

Salary Structure of Teachers:

S.N.	Name	Designation	Consolidated Pay	Basic Pay (p.m.)	Grade Pay	DA	Perquisite/ Allowance
a	Prof. K.V.Raju	Director	-	82,400.00	-	119%	Rent Free Furnished Accomodation
b	Prof. G. Krishnamurthy	Dean	1,90,000.00	-	-	-	Rent Free Furnished Accomodation
c	Prof. E.N. Reddy	Associate Professor	-	46,987.00	9500	119%	Rent Free Furnished Accomodation
d	Prof. Surya Bhushan	Associate Professor	-	44,658.00	9500	119%	Rent Free Furnished Accomodation
e	Prof. Sridhar Telidevera	Associate Professor	-	50,262.00	9500	119%	Rent Free Furnished Accomodation
f	Prof. Jaya Kritika Ojha	Assistant Professor	-	25,784.00	8000	119%	Rent Free Furnished Accomodation
g	Prof. Piyush Kumar Singh	Assistant Professor	-	25,784.00	8000	119%	Rent Free Furnished Accomodation
h	Mrs. Aditi Thakur	Assistant Professor	-	24,304.00	8000	119%	HRA @ 20%
i	Prof. Amrita Dhiman	Assistant Professor	-	23,596.00	8000	119%	Rent Free Furnished Accomodation



KV Raju (25)



5 Related Party Disclosure:

S.N.	Particulars	Remarks
a	Transactions between the educational Institution and the trust and society managing the Educational Institution.	Nil
b	Transactions between the educational Institution and the trustees or the members of the Governing Body of the Educational Institution.	Nil
c	Transactions between the educational institution & the author of the trust or the founder of the institution.	Nil
d	Transactions between the educational institution & the author of the trust or the founder of the institution.	Nil
e	Transactions between the educational institution and the relatives of the trustees, or members of the governing body managing the educational institution or the author of trust or the founder of the Institution.	Nil
f	Transaction between the educational Institution and its key management personnel or the relatives of Key Management Personnel.	Nil

Relatives means " the spouse, son, daughter, brother, sister, father and mother and related spouse who may expected to influence , or influenced by , that individual in his / her dealing with the educational Institution.

Key Management Personnel means " the principal and the person associated with procurement & Finalisation of Goods and Services.

Additional Disclosure of Related Party transaction-If Transaction exist.

S.N.	Particulars	Remarks
(i)	Name of Transacting related party.	Not Applicable
(ii)	A description of relationship between the parties	Not Applicable
(iii)	A description of the nature of transaction.	Not Applicable
(iv)	Volume of the trasactions; either as an amount or as an appropriate proportion.	Not Applicable
(v)	The amounts or appropriate proportions or outstanding items pertaining to related parties at the balance sheet date and provisions of doubtful debts due from such parties at that date; and	Not Applicable
(vi)	Amounts written off or written back in the period in respect of debts due from or to related parties.	Not Applicable

Note : Previous year figures have been regrouped/reclassified for better presentation/disclosure.



KVRam (26)



Development Management Institute Society
Second Floor, Udyog Bhawan Campus, East Gandhi Maidan, Patna-800004

Cash Flow Statement for the Year ended as on 31.03.2016

Particulars	Amount(Rs.)	Amount(Rs.)
Cash Flow from Operating Activities		
Surplus/(deficit) for the year		-636,20,621.06
Adjustments for the non-operating expenses		
Depreciation	102,70,673.66	
Write Offs	-	
Interest Expense on Loans	-	
(Interest Income)	-	
(Dividend Income)	-	
(Grants relating to assets recognised as income in the Income & Expenditure Account)	-	102,70,673.66
Surplus/(deficit) before changes in the Current Assets/Current Liabilities		(533,49,947.40)
(Increase)/Decrease in Current Assets		
Less: Increase in Current Assets	-35,97,671.00	-35,97,671.00
Increase/(Decrease) in Current liabilities		
Add : Increase in Current Liabilities	16,29,218.00	16,29,218.00
A. Net Cash from Operating Activities		-553,18,400.40
Cash Flow from Investing Activities		
(Purchase)/Sale of fixed assets	-445,60,190.00	
(Purchase)/Sale of investments	-1497,00,000.00	
Interest received	-	
Dividend received	-	
B. Net Cash from Investing Activities		-1942,60,190.00



KV Ray



Cash Flow from Financing Activities		
Additions to General Fund during the year	1690,00,000.00	
Grants/funds in nature of founder's/promoter's contribution	338,25,000.00	
Grants/funds related to assets not requiring fulfilment of any obligation	585,00,000.00	
Endowment fund (principal's sum)	-	
Proceeds from long term borrowings	-	
(Repayment of long - term borrowings)	-	
Interest paid on loans	-	
C. Net Cash Flow from Financing Activities		2613,25,000.00
Net Increase in Cash & Cash equivalents during the period (A+B+C)		117,46,409.60
Net Increase/Decrease in Cash Equivalents		-
Cash and Cash Equivalents at the beginning of the period		-
Cash Balance	43,385.00	
Bank Balance	237,23,136.00	237,66,521.00
Cash and Cash Equivalents at the end of the period		355,12,930.60

For Development Management Institute
Society

KV Kpm

Secretary

Patna
7th June'16



Chairman

Anup Mukerji

In terms of our attached report of even date

For M/s Chanakya Ashok & Co.

Chartered Accountants

Signature of CA Archana Sharma over a circular stamp of Chanakya Ashok & Co. Chartered Accountants.

CA Archana Sharma

Partner, ICAI Membership No: 401921

FRN: 012680C

(28)

Development Management Institute Society
Second Floor, Udyog Bhawan Campus, East Gandhi Maidan, Patna-800004

Trial Balance as on 31.03.2016

Particulars	Debit (Rs.)	Credit (Rs.)
Unrestricted Fund		
---- Corpus	-	602,59,988.00
----General Fund	-	112,49,298.68
---- Designated/Earmarked Fund	-	2218,25,439.85
Restricted Fund	-	731,43,738.00
Accumulated Depreciation Fund	-	114,95,798.07
Current Liabilities & Provisions	-	34,51,151.00
Fixed Assets	602,59,988.00	-
Investments		
---- Long - Term	2150,00,000.00	-
----Short - Term	647,00,000.00	-
Current Assets	355,12,930.60	-
Loans, Advances & Deposits	59,52,495.00	-
TOTAL	3814,25,413.60	3814,25,413.60

For Development Management Institute Society

**In terms of our attached report of even date
For M/s Chanakya Ashok & Co.**

Chartered Accountants



K. P. Singh
Secretary

Chairman

CA Archana Sharma
Partner, ICAI Membership No: 401921
FRN: 012680C



Patna
7th June '16

(29)



www.dmi.ac.in



Development Management Institute

Udyog Bhawan (Second Floor), East Gandhi Maidan
Patna 800 004, Bihar, India
Telephone : +91 612 267 5180, 5283